



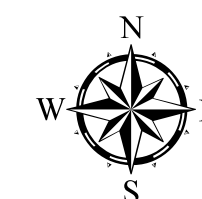
MAP A-2: FUTURE LAND USE MAP (FLUM)

City of Atlantic Beach 2045 Comprehensive Plan Map Series

*In the event of any conflict between any maps
and the text of the Comprehensive Plan, the text
of the Comprehensive Plan shall control.*

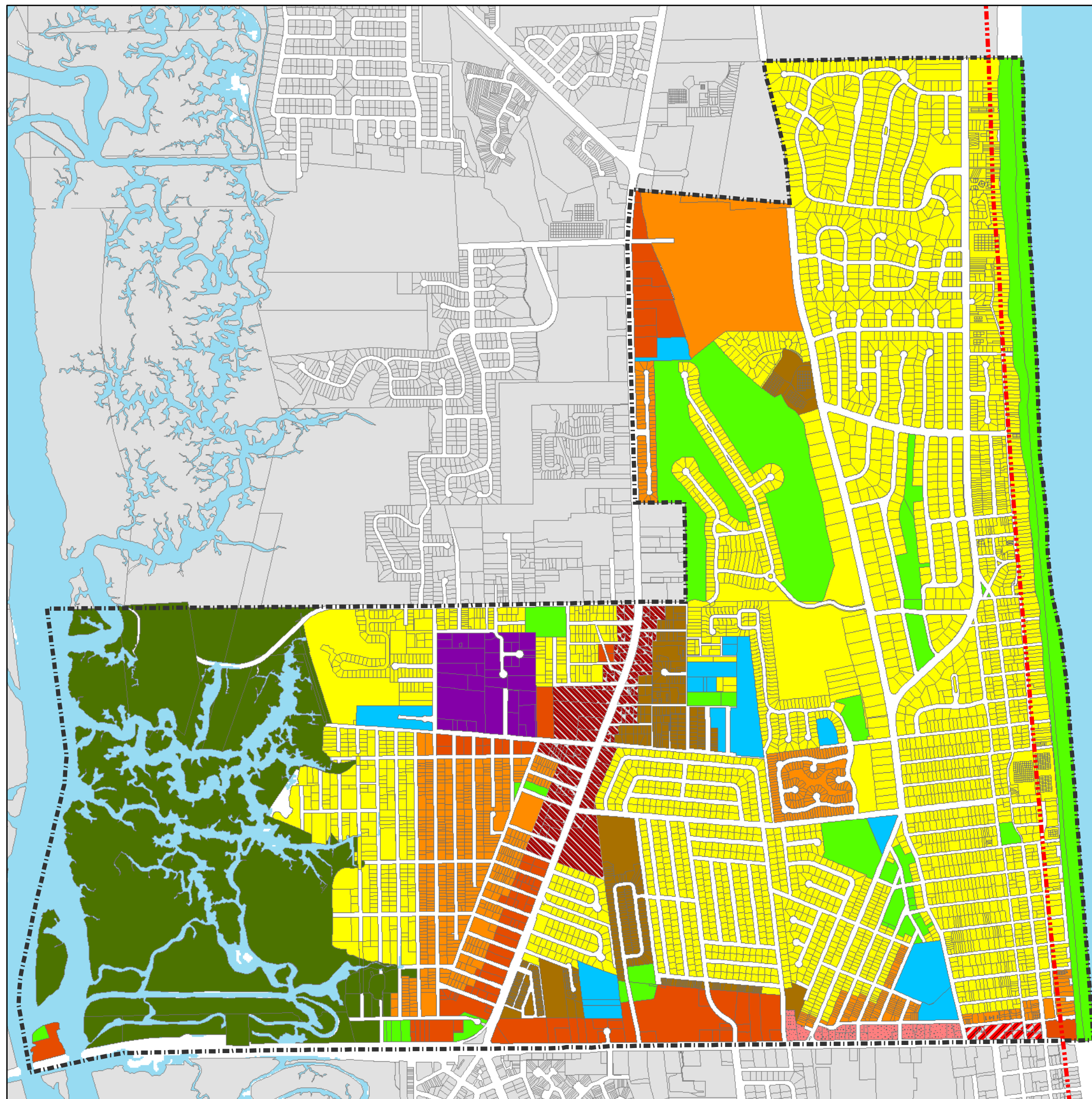
Future Land Use Designations

-  **Residential Low Density (RL)**
Up to six (6) dwelling units per acre
-  **Residential Medium Density (RM)**
Up to fourteen (14) dwelling units per acre
-  **Residential High Density (RH)**
Up to twenty (20) dwelling units per acre
-  **Conservation (CON)**
-  **Recreation/Open Space (R/O)**
-  **Public/Semi-Public (P/SP)**
-  **Central Business District (CBD)**
-  **Marsh Oaks Business District**
-  **Saltair Business District**
-  **Commercial (CM)**
-  **Light Industrial (L/I)**
-  **Coastal Construction Control Line**



*Areas designated as Conservation are approximate;
Exact boundaries to be determined by environmental survey*

0 0.25 0.5
Miles



Updated October 2025; Data Sources: ABGIS(2023); COJPAO(2022); SJRWMD; USFWS; FNAI; FDEP

Depicting Amendments Through Ordinance Number 90-25-254