

18th Street Beach Access Parking Space Evolution

1971

Study by the Jacksonville Planning Board titled “The Use of Automobiles on Jacksonville Area Beaches” reports 54 spaces located at the 18th Street access.

Prior to mid-1990s (exact date unknown)

Duval County Public Beach Access Site Inventory conducted by the Department of Natural Resources and City of Jacksonville Public Works Engineering Division reports 61 spaces at the 18th Street access. There is no date on this inventory but the Department of Natural Resources became the Department of Environmental Protection in the mid-1990s.

2004 Aerial: Shows 51 parking spaces

2008 Aerial: Shows 51 parking spaces

2011 Aerial: Shows 51 parking spaces

2020 Aerial: Shows 51 parking spaces

From 1971 Jacksonville Planning Board Study:

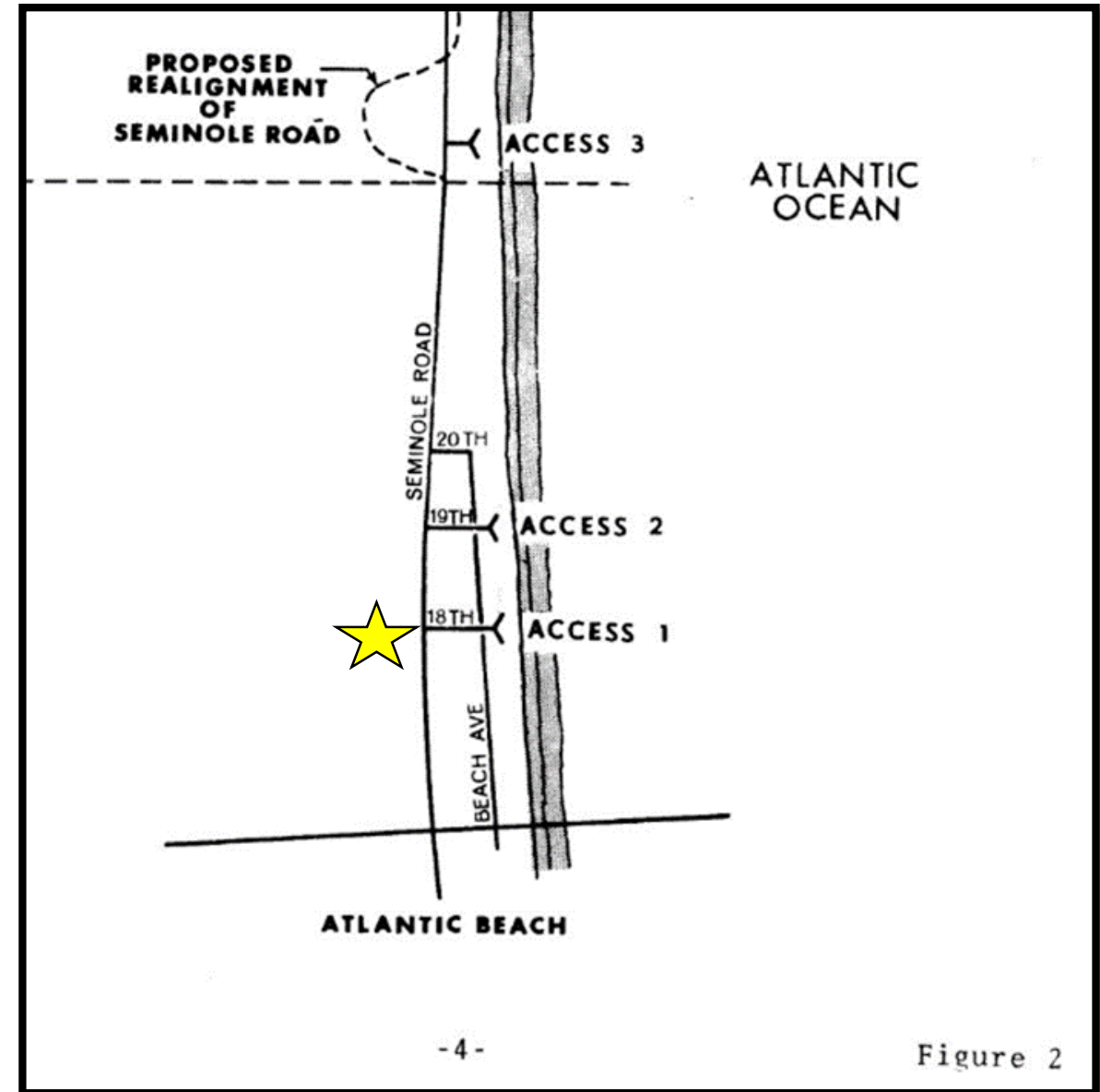
B. Seminole Beach South (Figure 2)

This section of shoreline extends from the Katherine Abbey Hannah Park, south to Atlantic Beach, a distance of approximately 7,000 feet. Vehicles are not allowed on this stretch of beach over its entire length.

There are two public accesses to the beach in this section, with limited off-beach parking provided at these accesses as follows:

- ★ Access #1 - 54 spaces
- Access #2 - 31 spaces

In addition, there are approximately 20 spaces available on 20th Street, which is located one block north of Access #2, for a total of 105 available spaces in this area.



From the Dept of Natural Resources Inventory:

DEPARTMENT OF NATURAL RESOURCES
DIVISION OF BEACHES AND SHORES

Public Beach Access Site Inventory

No. 2

Name of Access Site: 18th Street Access

Location: (R Monument and Street Address) Between Sta. 350+79 &
343+11 6' paved walkway 100' long Sta. 345+71

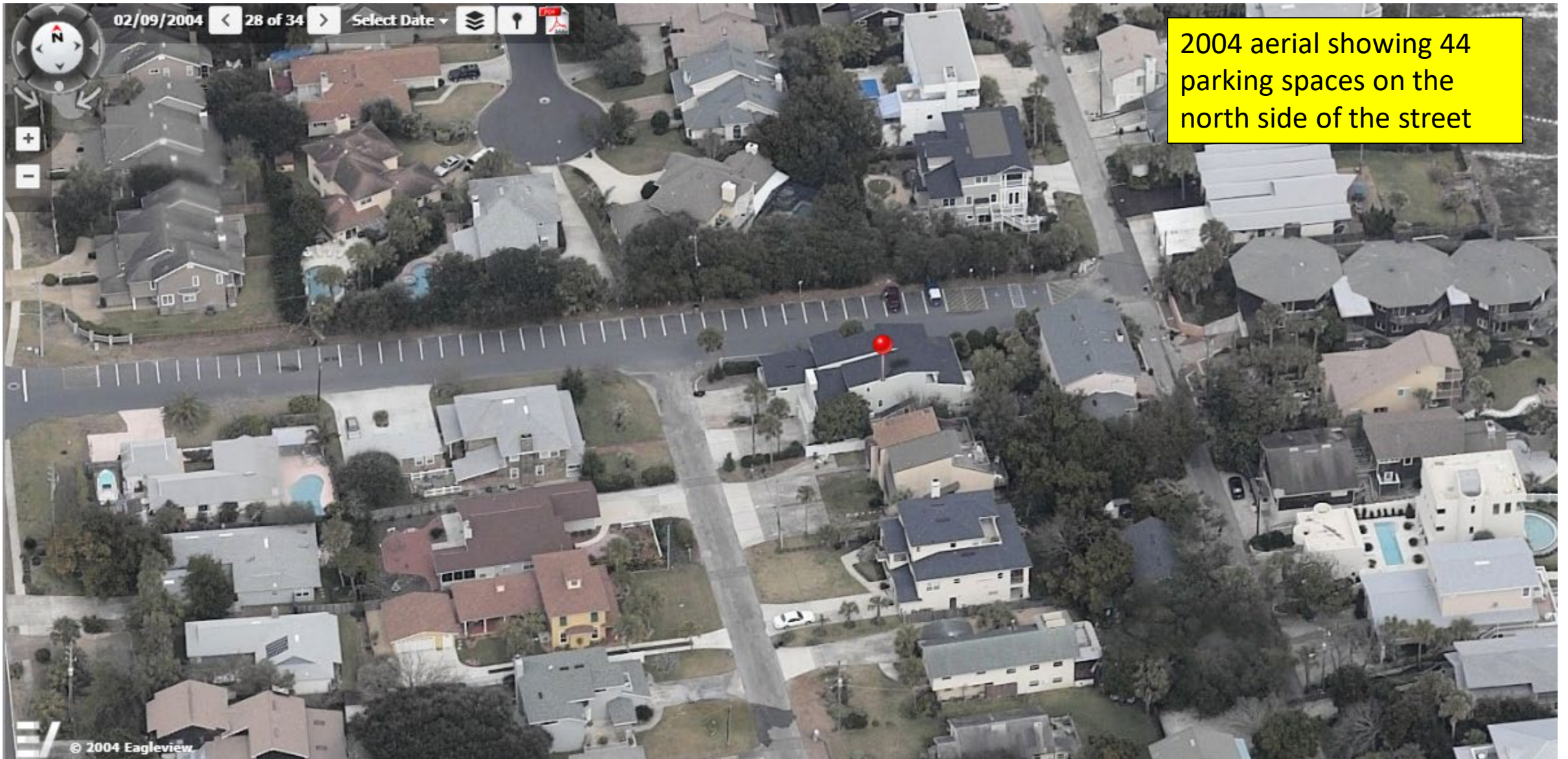
Ownership: City X County _____ State _____ Federal _____

Size: Acres _____ Length of Beach Frontage _____

No. Parking Spaces: 61 ★

Beach Access Existing Development: Concrete walkover, wooden
stairs on both ends.





2004 aerial showing 44 parking spaces on the north side of the street



02/09/2004



29 of 34

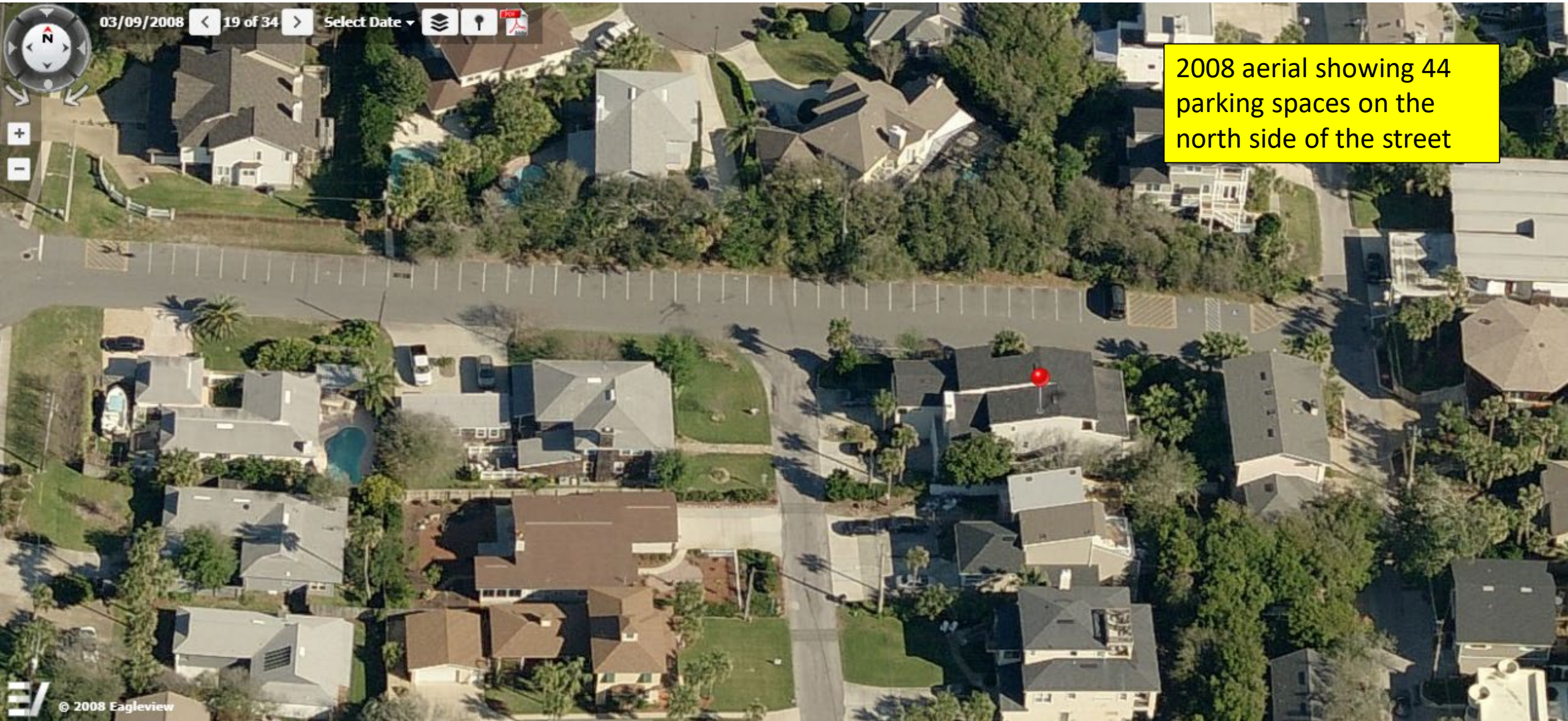


Select Date



2004 aerial showing 7
parallel parking spaces on
the south side of the
street





03/09/2008

19 of 34

Select Date

2008 aerial showing 44 parking spaces on the north side of the street



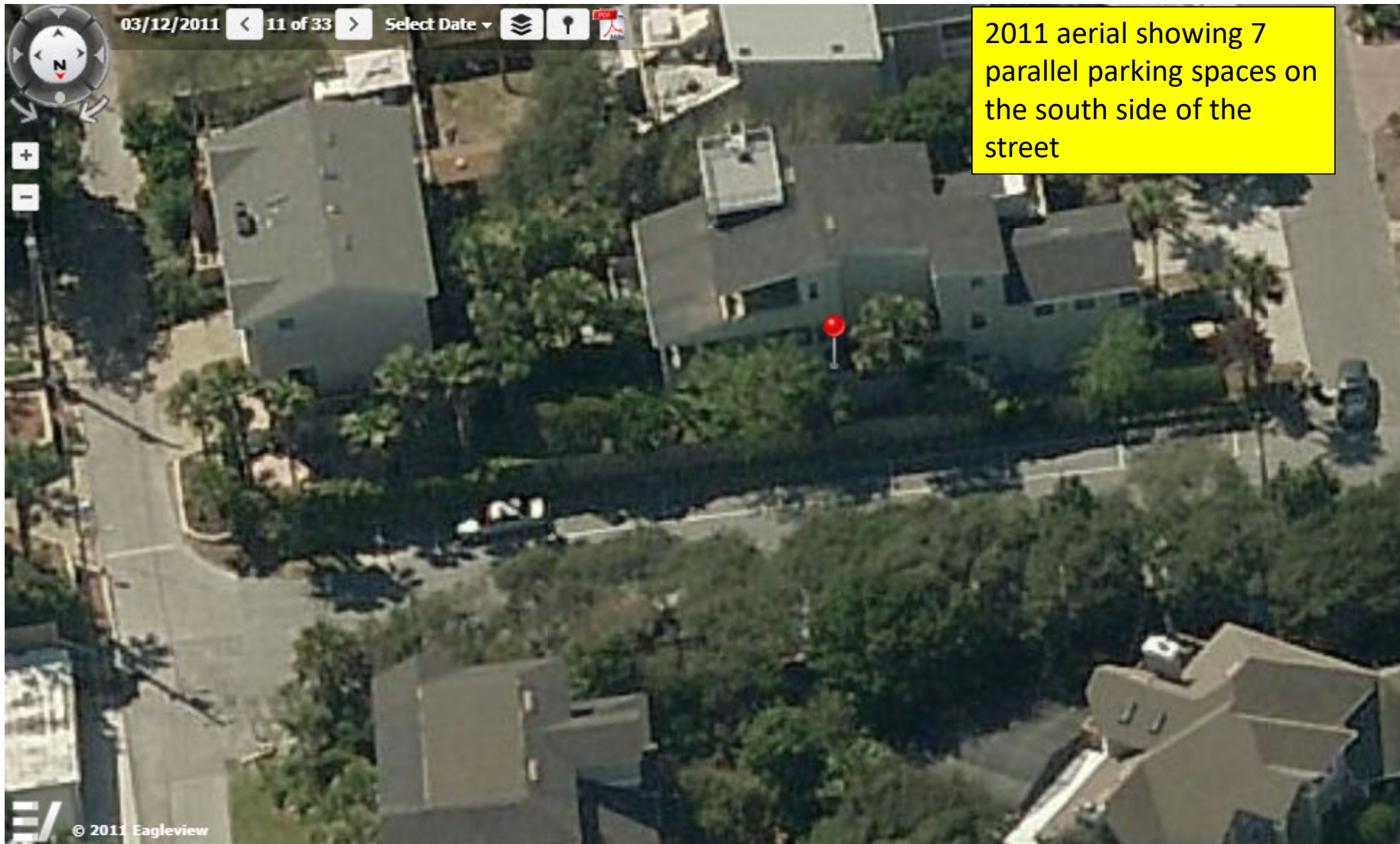
03/25/2008 < 20 of 34 > Select Date ▾

2008 aerial showing 7 parallel parking spaces on the south side of the street



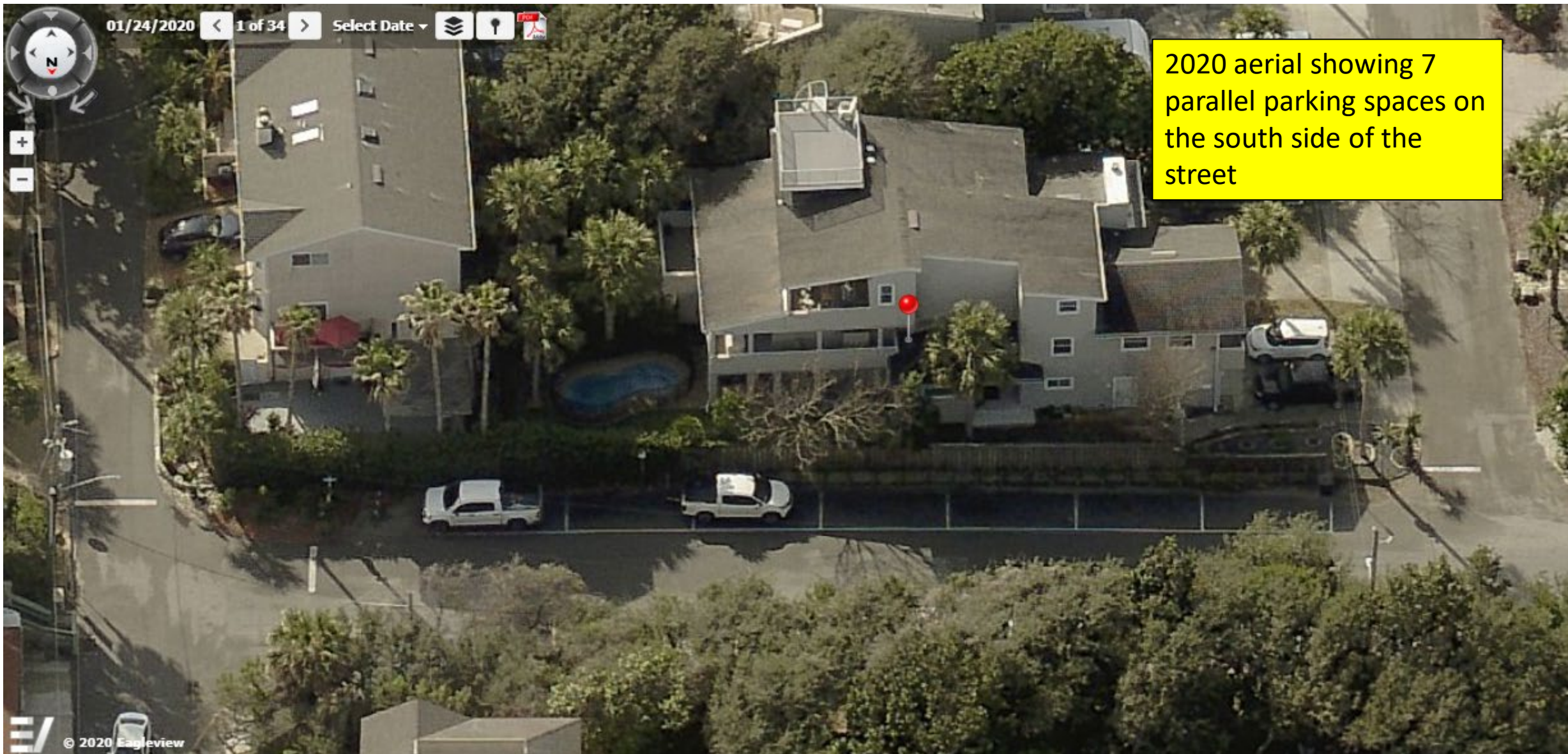


2011 aerial showing 44 parking spaces on the north side of the street





2020 aerial showing 44 parking spaces on the north side of the street



2020 aerial showing 7 parallel parking spaces on the south side of the street