



# 2030 PARKS MASTER PLAN

*City of Atlantic Beach, Florida*



# Executive Summary

A. Purpose of the Parks Master Plan

B. Planning Process



## A. PURPOSE OF THE PARKS MASTER PLAN

The City of Atlantic Beach Planning Department underwent a comprehensive parks planning process, from fall 2018 through late 2019, with the goal of developing a document that would inform and guide decision-making relative to the oversight of parks, facilities and programming into the next decade and beyond. The project began with a community survey and charrettes. Then, with help from the National Park Service and the Florida Chapter of the American Society of Landscape Architects, staff conducted additional charrettes to garner input from the community. The process was multi-pronged, including detailed assessments of the parks and existing facilities, department programming and procedures, consideration of national trends, and extensive community engagement to gather feedback directly from residents and community stakeholders relative to needs and opportunities for improvement.

A healthy network of parks, facilities and recreational opportunities are a vital contributor to a community's vibrancy, sense of place, and desirability as a place to live, work and play, which ultimately supports the community's economic stability. Public parks are the community's front yard, providing space for enjoyment of the natural environment, community gatherings, family activities, educational opportunities, sports leagues, fitness and wellness activities. They improve public and environmental health, create safe neighborhoods, educate and inspire our youth, and connect the community. While the beach and some portions of the Intracoastal Waterway are not officially designated as parks, the City values these conservation and recreation areas. They are an important component to the overall park system.

The City of Atlantic Beach Parks Master Plan is a long-range planning document that is meant to help shape the direction, development and delivery of City's park and recreation system. This plan includes a community profile, physical inventory and site assessment of existing parks facilities and recreation program, recommendations for improvements, land acquisition, and capital project development. The purpose of this plan is to advance the mission and vision of City Commission to further the establishment of a high-quality parks system and maximize the effectiveness of the city and its resources.



## B. Planning Process

The planning process includes three significant report milestones:

- 1) Administrative Draft – A working draft of the Parks Master Plan 2030 distributed amongst key City staff for review, study and comment.
- 2) Draft Plan – Comments on the Administrative Draft are incorporated, and the report is sent to the Environmental Stewardship Committee (ESC) for review and input and available to public review and comment.
- 3) Final Plan – Final comments from the public, City Commission, Recreation Department, Public Works Department, and key City staff are incorporated before release of the Final Plan. The Final Plan will be adopted by the City Commission upon approval.

# 1.0 Introduction

## 1.1 Introduction

## 1.2 Background

## 1.3 Guiding Principles

### 1.1 Introduction

The Parks Master Plan has been developed to systematically guide the City in its provision of exceptional parks, park amenities, recreational facilities and programming that meet the wants and needs of the Atlantic Beach community. It is a long-range planning document that is meant to help shape the direction, development and delivery of the City's parks and recreation system. The plan provides guidance and policy direction to shape the growth of the city parks. This plan includes a community profile, physical inventory and site assessment of the existing parks, facilities and recreation programs, recommendations for current and future improvements, land acquisition, and capital project development.

By engaging stakeholders and soliciting public input, the planning process provided a foundation for understanding and responding to the parks and recreation needs of the community. The process involved strategically examining the community's vision and existing community services, facilities, and resources; and assessing future needs concerning parks, recreation, open space, and greenways.

The purpose of this plan is to advance key priorities of the City Commission by furthering the establishment of a high-quality parks system, maximizing the effectiveness of our resources, and protecting our resources. The existence of a formal strategic planning document for the parks system that has been endorsed by the City Commission is also a vital step for the city when seeking funding sources for qualifying projects.

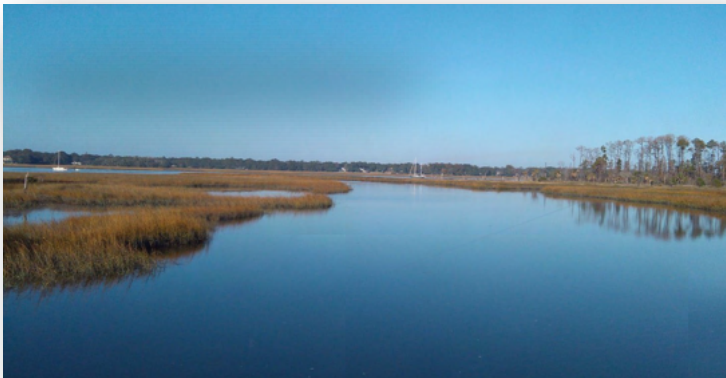




## 1.2 Background



The City of Atlantic Beach is a small coastal community in northeast Florida consisting of approximately 3.5 square miles of land area and a population of 13,831 (2018 U.S. Census estimate). The City is located between two miles of Atlantic Ocean beachfront on the east and the expansive marsh and estuarine environment of the San Pablo Creek/ Intracoastal Waterway on the west. The City is a nearly "built-out" municipality where the predominant land use is residential consisting of stable and well-established neighborhoods. The City possesses a unique character and "personality" where a high quality of life, diverse recreational activities, preservation of community



## 1.3 Guiding Principles

Several plans and documents help guide the overall principles, goals and objectives of this Parks Master Plan. Relevant information, studies, and recommendations from each of these documents were considered and utilized in forming this Plan.

**Bikeway and Trail Plan:** The City completed a plan for recreational trails and pathways in collaboration with the City of Neptune Beach and the City of Jacksonville Beach in 2002, and updated the plan in 2009. This collaboration produced a general and conceptual plan for a system of bike and pedestrian routes to connect each of the three beach cities. Based on the findings of the study, a priority list of desired routes was developed.

**Marsh Preserves Master Plan:** Completed in 2012, the Marsh Preserves Master Plan serves as a blueprint for the City to provide orderly, sustainable and enhanced public access, passive recreation, and environmental/ecological education opportunities and management of the Marsh Preserves.

**2018-2030 Comprehensive Plan:** The Recreation and Open Space Element of the City's 2018-2030 Comprehensive Plan contains the following provisions for the management of lands for recreation and open space within the City:



**Goal E.1:** *The City shall maintain sufficient parks, recreation facilities and open space so as to provide the citizens with a wide variety of leisure time activities in order that the City continues to be a healthy, desirable and attractive community in which to live.*

**Objective E.1.1:** *The City shall inventory at least once every five years, public and private recreation resources to identify service inadequacies and opportunities for sharing of facilities and programs so as to provide safe, convenient access for all residents to beaches, parks and other recreation facilities in accordance with Level of Service standards set forth within this Plan amendment.*



**Objective E.1.2:** *The City shall continue to provide varied and diverse recreation activities to the community, and shall coordinate with public agencies, private organizations and individuals, as well as adjacent local governments to supplement efforts and resources of the City.*

**Objective E.1.3** *The City shall ensure that recreation facilities and open space areas are provided in conjunction with development review and permitting so as to maintain or exceed the level of service standards set forth within this Plan and prior to the impacts of such development.*

In addition, the Future Land Use element and Transportation element help illustrate the communities desire to enhance our parks and provide access to our natural resources:

**Objective A.1.3** *The City shall encourage future development and redevelopment, which 1) retains the exceptionally high quality of life and the predominantly residential character of the City of Atlantic Beach, 2) provides for the preservation and protection of the dense tree canopy, and 3) which provides for varied and diverse recreational opportunities, including the preservation, acquisition and development of public access to the beach, Intracoastal Waterway and other water-related resources, and which provides for and maintains energy efficient land use patterns.*

**Policy A.1.3.3** *The City shall continue to manage, preserve and construct facilities that provide diverse opportunities to all residents for both passive and active recreation, including parks, nature preserves, trails and bikeways, skateboard parks and ball fields, dune crossovers, waterway accesses and associated amenities.*

**Policy A.1.3.5** *The City shall continue to expand opportunities and facilities for public access to the beach, the Intracoastal Waterway, and associated creeks and marshes for passive and natural resource based recreation activities, such as hiking and biking, canoeing and kayaking, birding, fishing and other similar active ties that have limited impact on these resources.*

**Policy B.1.3.5** *The City shall support the incorporation of bike paths and pedestrian way systems in the design of new roadway facilities and the upgrading of existing facilities in accordance with accepted design standards and in response to the demonstrated need for such facilities based on survey data or information maintained by the City and the North Florida TPO. (add new comp plan language)*

**Objective D.3.5** *The City shall provide opportunities for appropriate recreational uses and access to public waterways, the beach and natural areas and shall restrict activities that harm or diminish the public's right to use such publicly owned natural resources.*

**Policy D.4.1.2** *The City shall continue to encourage and develop the "walk-ability and bike-ability" of the City as a means to promote the physical health of the City's residents, access to recreational and natural resources, and as a means to reduce greenhouse gas emissions.*

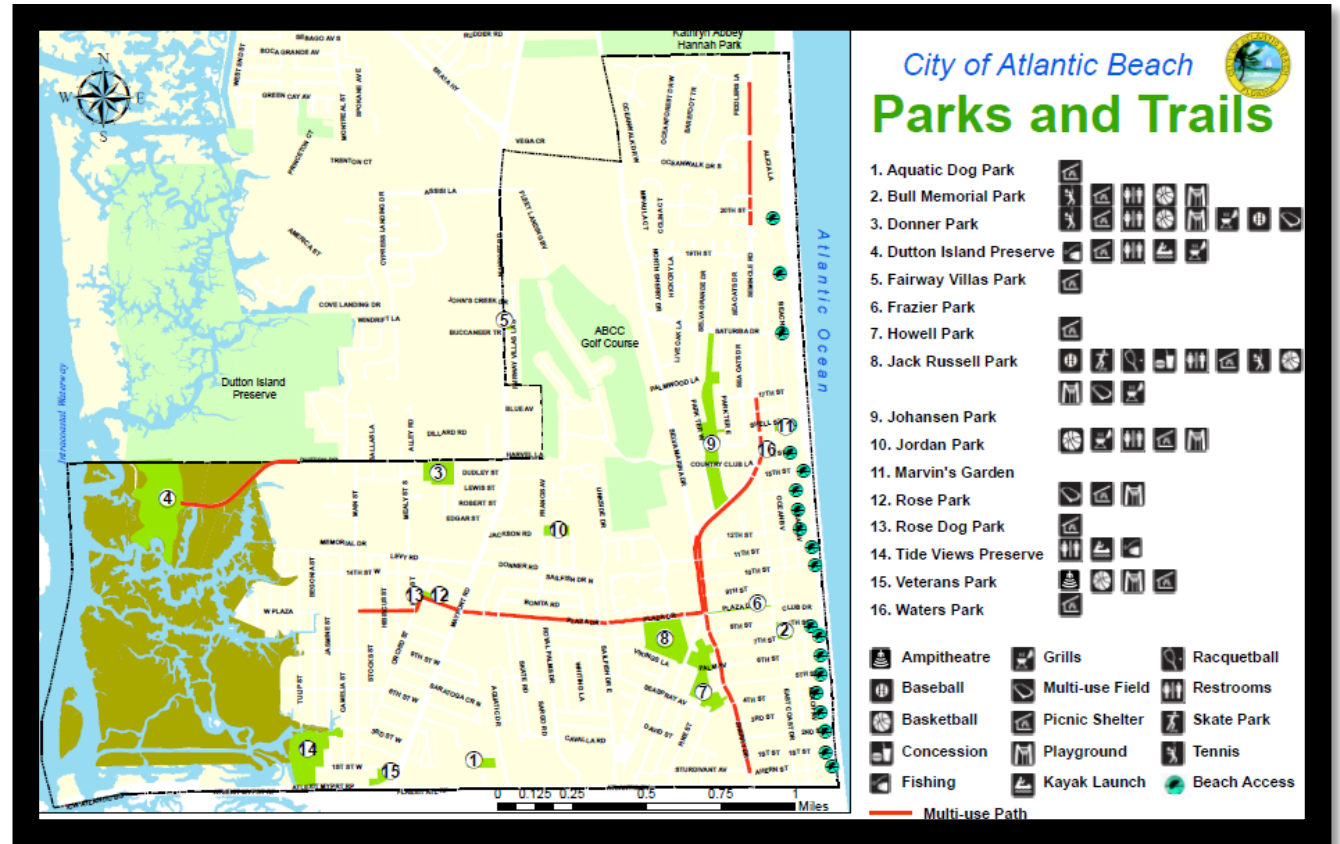


Update map to include selva preserve and riverbranch.

## 2.0 Existing Parks

### 2.1 Parks and Facilities Inventory

### 2.2 Level of Service



## 2.1 Parks and Facilities Inventory

The City of Atlantic Beach has 18 parks and preserve -- each with a unique identity and function. The City's parks and preserves range in size from the 350acre Riverbranch Preserve to small pocket parks like Marvin's Garden and Fairway Villas Park. Similarly, some function as active parks with playgrounds and ball fields while others are passive and largely remain in their natural state. The City has 2.25 miles of white sandy beaches with 21 street beach access points and provides a two-mile paddle trail on the Intracoastal Waterway.

City of Atlantic Beach Parks and Preserves Inventory		
Park/Preserve Name	Park Classification	Acreage
Aquatic Dog Park	Active	2.15
Bull Memorial Park	Active	1.44
Donner Park	Active	5
Dutton Island Preserve	Passive	31.86
Fairway Villas Park	Passive	0.18
Frazier Park	Passive	0.6
Howell Park	Passive	9.64
Jack Russell Park	Active	12.79
Johansen Park	Passive	13.83
Jordan Park	Active	2.22
Marvin's Garden	Passive	0.12
Riverbranch Preserve	Passive	350
Rose Park	Active	0.98
Rose Dog Park	Active	0.18
Selva Preserve (recently purchased-not officially named)	Passive	3.52
Tide Views Preserve	Passive	10.5
Veterans Park	Active	1.5
Waters Park	Passive	0.25
<b>Total</b>		<b>446.76</b>

Park/Preserve Name	Playgrounds	Basketball Courts	Tennis Courts	Baseball Fields	Multi-Purpose Fields	Dog Parks	Skate Parks	Community Centers
Aquatic Dog Park						1		
Bull Memorial Park	1	1	1					1
Donner Park	1	2	2	1	1			1
Dutton Island Preserve								
Fairway Villas Park								
Frazier Park								
Howell Park								
Jack Russell Park	2	1	6	3	2		1	
Johansen Park								
Jordan Park	1	1						1
Marvin's Garden								
Riverbranch Preserve								
Rose Park	1				1			
Rose Dog Park						1		
Selva Preserve								
Tide Views Preserve								
Veterans Park	1	1						
Waters Park								
<b>Total</b>	<b>7</b>	<b>6</b>	<b>9</b>	<b>4</b>	<b>4</b>	<b>2</b>	<b>1</b>	<b>3</b>



## 2.2 Level of Service

Population-based level-of service standards historically have been a common tool used by governments in analyzing their parks and recreations facilities. However, because cities are so diverse, the National Recreation and Park Association (NRPA) and Florida Statewide Comprehensive Recreation Plan (SCORP) have discontinued the use of these standards and now encourage cities to compare themselves with other similar communities. The chart below shows how Atlantic Beach compares to Northeast Florida (2017 SCORP) and to communities with populations less than 20,000 (2019 NRPA).

	2019 NRPA national median (cities with a population with less than 20,000)	2017 SCORP for Northeast Florida	2019 City of Atlantic Beach Inventory (using 2018 Census estimated population of 13,861)
Parks	1 per 1,231 residents	Not available	1 per 770 residents
Acres of Parks	11.8 per 1,000 residents	Not available	31 per 1,000 residents
Playgrounds	1 per 2,269 residents	1 per 3,285 residents	1 per 1,980 residents
Basketball Courts	1 per 3,975 residents	1 per 2,431 residents	1 per 2,310 residents
Tennis Courts	1 per 2,500 residents	1 per 2,694 residents	1 per 1,540 residents
Baseball Fields	1 per 3,378 residents	1 per 2,847 residents	1 per 3,465 residents
Multi-purpose Fields	1 per 3,875 residents	1 per 5,031 residents	1 per 3,465 residents
Dog Parks	1 per 10,000 residents	Not available	1 per 6,930 residents
Skate Parks	1 per 10,234 residents	1 per 4 million residents	1 per 13,861 residents
Community Centers	1 per 10,000 residents	1 per 10,959 residents	1 per 4,620 residents

The comparison chart above shows that the City exceeds the NRPA level of service in every category, except for number of baseball fields. The City's 2018-2030 Comprehensive Plan also defines level-of-service standards for parks and recreation within the City (see below). By comparing the City's inventory to the standards set forth in the Comprehensive Plan, all level of service standards are met except for the number of baseball/softball fields.

**Table E-1. Recreation and Open Space Level of Service Standards City of Atlantic Beach, 2030**

TYPE OF FACILITY	LEVEL OF SERVICE STANDARD
Playground (with equipment)	1 playground per 2,500 population
Baseball or Softball Field	1 field per 2,500 population
Soccer or Football Field	1 field per 5,000 population
Basketball Court	1 court per 2,500 population
Tennis Court	1 court per 2,500 population
Running/Hiking Trail	1 trail per 10,000 population
Community Center	1 center per 10,000 population
Beach Accesses	1 access per 2,500 population
Passive Park/Scenic Open Space	5 acres per 1,000 population
Golf Course* (public or private)	1 18-hole course per 25,000 population
Regional Park/Open Space*	5 acres per 1,000 population

\*Regional facilities are defined as those, which may not be located within the City of Atlantic Beach, but are in such close proximity so as to directly serve the daily recreational needs of the residents of the City of Atlantic Beach, such as Kathryn Abby Hanna Park and area golf courses.

## 3.0 Park-by-Park Analysis

Update map to include selva preserve and riverbranch.

- 3.1 Aquatic Dog Park
- 3.2 Beach Accesses
- 3.3 Bull Memorial Park
- 3.4 Donner Park
- 3.5 Dutton Island Preserve
- 3.6 Fairway Villas Park
- 3.7 Frazier Park
- 3.8 Howell Park
- 3.9 Jack Russell Park
- 3.10 Johansen Park
- 3.11 Jordan Park
- 3.12 Marvin's Garden
- 3.13 Riverbranch Preserve
- 3.14 Rose Park & Rose Dog Park
- 3.15 Selva Preserve
- 3.16 Tide Views Preserve
- 3.17 Veterans Park
- 3.18 Waters Park





## 3.1 Aquatic Dog Park

**Historical Background:** The Atlantic Beach Dog Park, also known as the Aquatic Dog Park, was the outcome of a citizen-led effort that included funding from a citizens volunteer committee and the City of Jacksonville. The dog park was originally planned to be located at Tide Views Preserve, but after citizen requests and consideration, the city commission approved the construction of the dog park on city-owned property at the Hopkins Creek pond site in 2010. Included in the approved plan were separate play areas for small and large dogs, a rinsing station, benches, and multiple dog waste stations. The Atlantic Beach Dog Park Committee, operating under the umbrella of the Atlantic Beach Public Arts Commission, Inc. raised approximately \$7,000 for construction of the park and agreed to routinely clean up the park and support regular maintenance and improvements to the park through fundraising events. The grand opening for the new dog park was held in January, 2011.



### Existing Conditions/Inventory:

#### GENERAL

Address: 268 Aquatic Drive  
Park Type: Active  
Size: 2.15 acres  
RE#: 177411-0200  
Parking: 5 spaces  
Bicycle: None

#### AMENITIES

- 1 Fountain in pond
- 1 Informational sign for "Hopkins Creek Regional Stormwater Facility"
- 1 Covered shelter- 10' x 10'
- 1 Tennis ball holder/storage bin
- 6 Trash cans
- 1 Dog washing area at entrance
- 6 Dog bag dispensers
- 1 Sign with dog park rules
- 1 Small dog play area
- 8 Benches





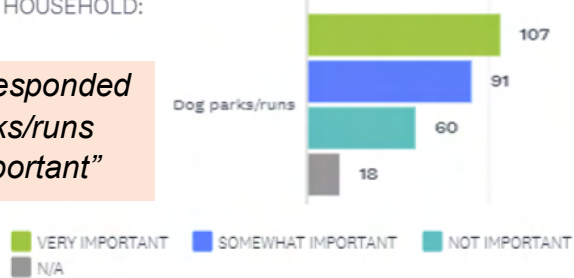
## Community Input:

### From the online "Parks & Trails Survey"

HOW IMPORTANT ARE THE FOLLOWING PARK AMENITIES/SERVICES TO YOU AND YOUR HOUSEHOLD:

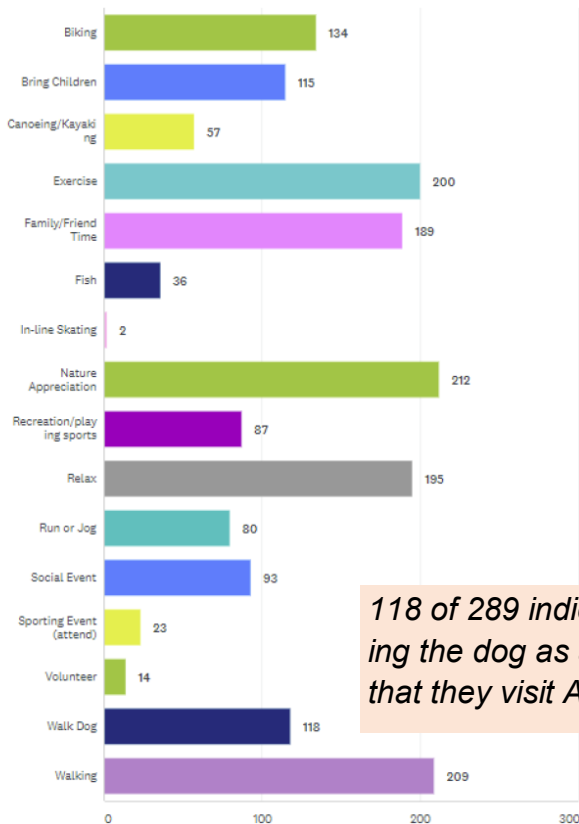
Answered: 288 Skipped: 3

**107 of 288 responded that dog parks/runs are "very important"**



### WHY DO YOU VISIT ATLANTIC BEACH PARKS? (CHECK ALL THAT APPLY)

Answered: 289 Skipped: 2



**118 of 289 indicated walking the dog as a reason that they visit AB parks**

### 2018 Public Workshop comments

- Adopt-a-park
- Membership
- Make larger



### Staff Input:

- ⇒ Would like to add a pervious asphalt path around the pond
- ⇒ Mulch, coquina and stone are not an option due to periodic flooding of the park
- ⇒ Would like to add a dog obstacle course
- ⇒ The park requires re-sodding a couple of times per year
- ⇒ The fountain in the pond is difficult to maintain

## Recommendations:

1. Implement “**green infrastructure**” to improve water quality by filtering contaminants, such as dog feces, from the pond water to help improve water quality. This will help improve water quality of Hopkins Creek as well as improve the safety of the dogs that swim in the pond. Also, much of this park has to be re-sodded twice a year, which can be expensive and time-consuming for Public Works. Planting additional grasses, shrubs, and trees will reduce the area required for maintenance and, as a result, reduce maintenance costs and time.

*Trees and shrubs will capture stormwater runoff before it enters the pond which will help reduce flooding in this area and increase the holding capacity of the dog park.*



## Examples of green infrastructure

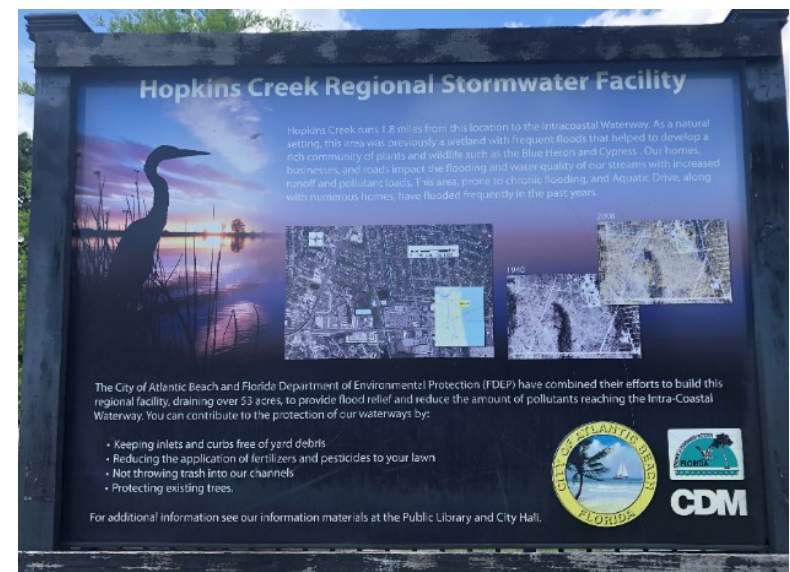
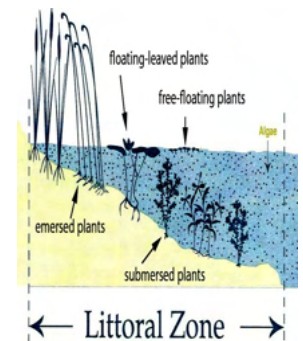
### “Floating Wetlands”

- ◆ Absorb nitrogen and phosphorous from water bodies



### “Aquatic Macrophytes”

- ◆ Include submersed, emerged, and floating plants
- ◆ Affect nutrient cycles
- ◆ Increase water clarity
- ◆ Stabilize shorelines





## Recommendations:

II. Add a pervious asphalt **walking path** around the pond. A walking path will help reduce the wear and tear on the existing sod while increasing mobility and ease of access to the entire park for visitors. Much of the path will be well shaded providing a comfortable path for visitors. A pervious material is recommended to reduce flooding impacts and minimize impacts to the pond's stormwater capacity.



III. Restore portions of the pond bank that appear to be eroding. Shore erosion can be a result of several factors such as the slope of the bank, the soil, the fountain creating wave action, and lack of protection. Shore stabilization can be accomplished through vegetation plantings, installing riprap, engineering, and other measures.



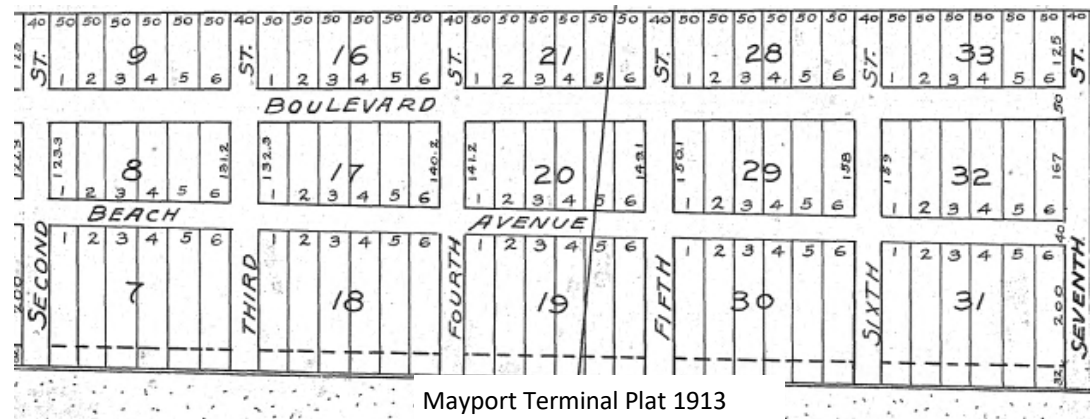
IV. Add vegetation to screen the "blank wall" at the western edge of the dog park. Alternatively, speak to the property owner about having a mural painted on this wall.



## 3.2 Beach Accesses

**Historical Background:** The beach is one of largest natural resources and recreational opportunities in our City. There are 20 public beach access points along the beach. Some access points are smaller in scale with little or no parking while some of the access points have parking and more amenities. The city provides life guards during the warmer months and allows camp fires during the colder months. All beach accesses have trash cans and ADA beach wheelchairs are available upon request at beach access points. The City has sea turtle lighting regulations along the beaches and works with the nonprofit origination, Beaches Sea Turtle Patrol to enforce these regulations. Additional information about the Beaches Sea Turtle Patrol can be found at <http://www.bstp.net/>.

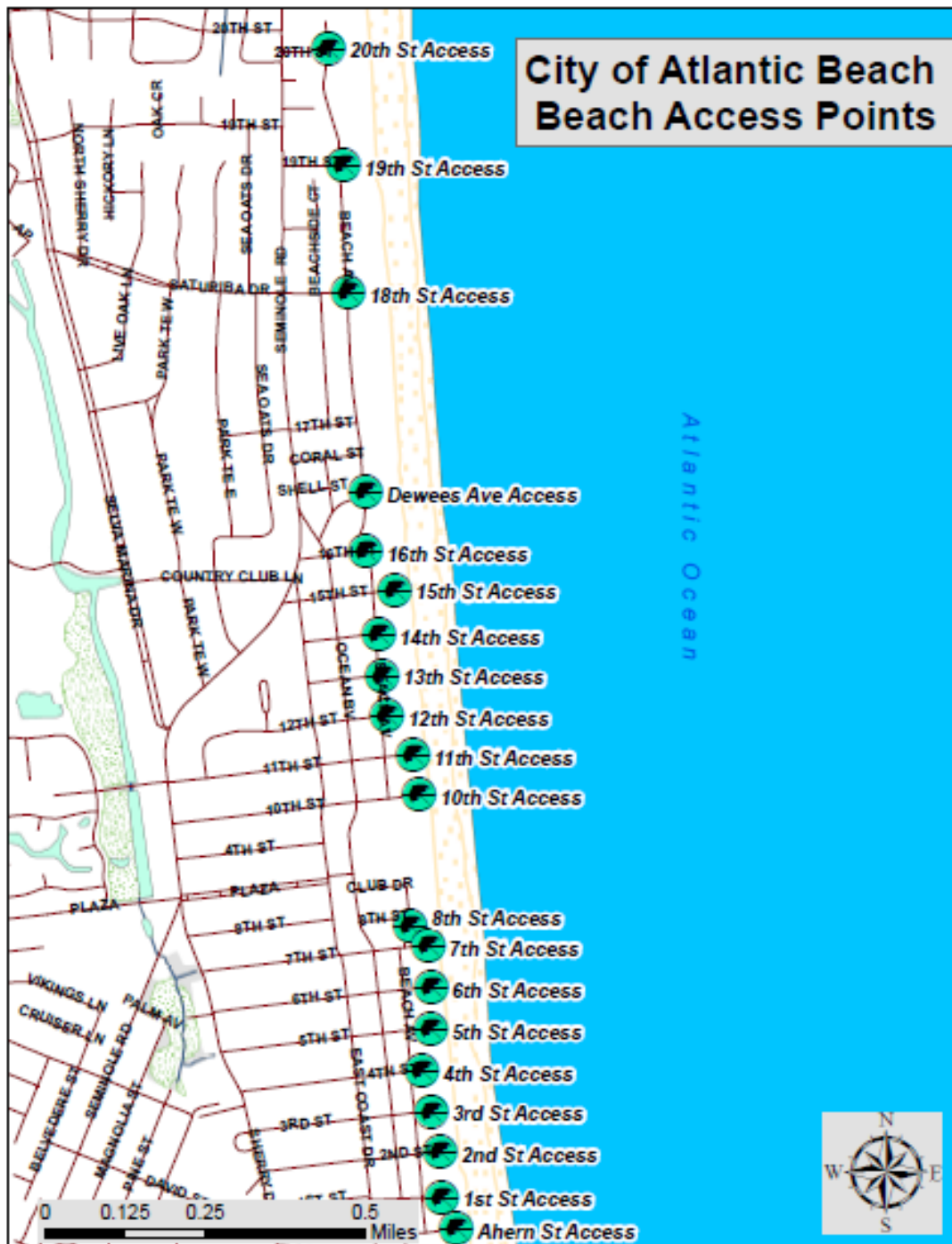
The Atlantic Boulevard, Ahern Street, and First Street beach accesses were platted in 1911 as part of the Neptune Beach Plat. Two years later, the Second Street through Seventh Street accesses were platted, each as a 40 foot wide right-of-way. The Mayport Terminal Replat in December of 1913 established the 11th through 16th Street beach accesses as 40 foot right-of-ways as well. However, the 16th Street right-of-way was later closed. In 1993, the City of Atlantic Beach purchased the property that is the 16th Street beach access today. The 10th Street beach access is the south 40 feet of Lot 1 Block 44 of the Mayport Terminal Replat (not platted as a right-of-way).



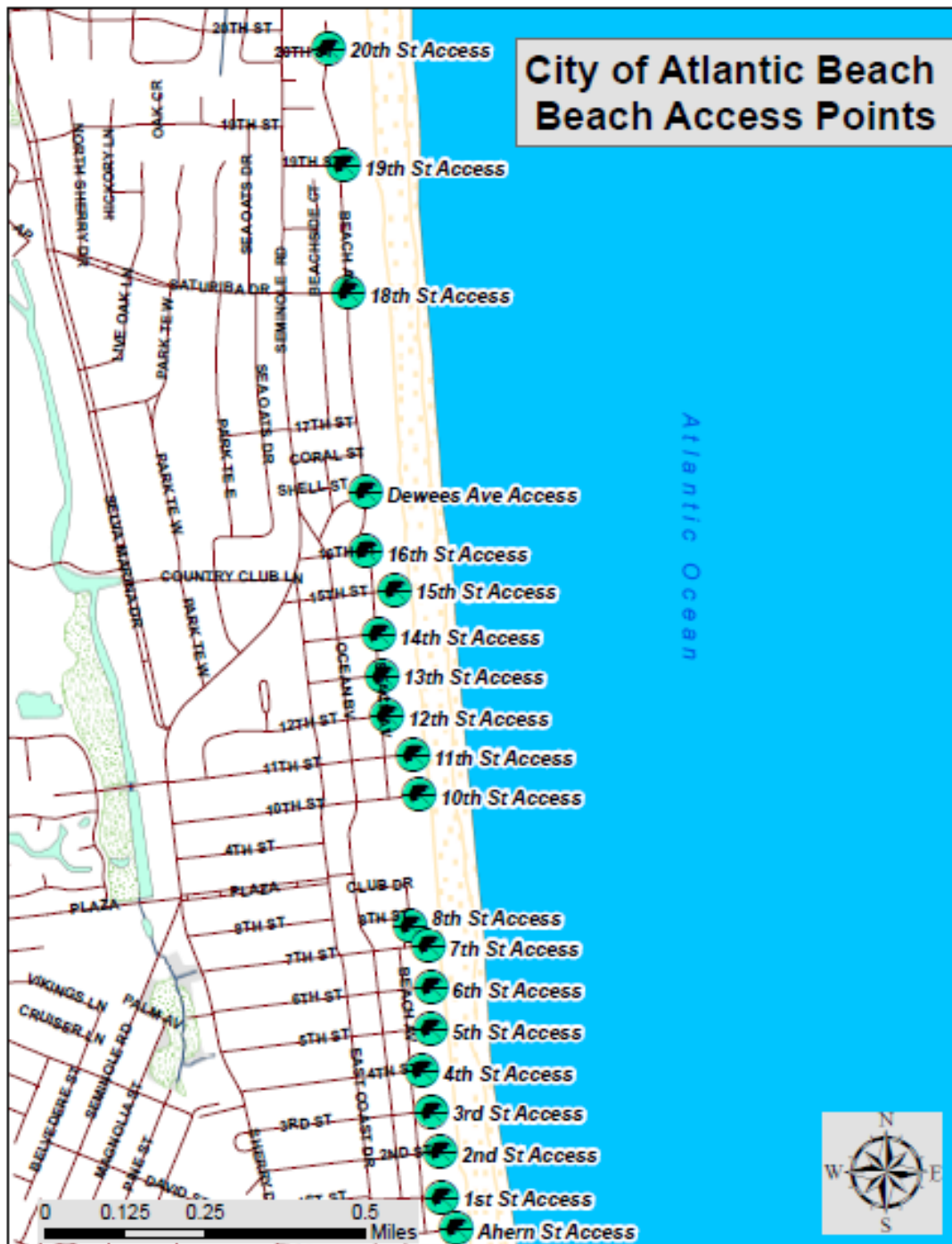
The 18th Street access was platted in 1936 as a 60 foot right-of-way. However, the portion of this right-of-way east of Beach Avenue was closed by the City of Jacksonville except for the middle 10 feet which was designated as a beach access. The 19th Street beach access was also platted in 1936 as a 40 foot right-of-way. What is known as the 8th Street beach access wasn't established until 1954 when it was designated as a 10 foot wide "Walkway" on the Club Manor plat. Both the Dewees Avenue and 20th Street beach accesses are easements placed over private property designated for public access to the beach.







Access Location	Parking	Bike Rack	Bench	Additional Amenities
Ahern Street	√	√	√	Lifeguard Station Dune walkover Shower Pet wash stations Recycle cans Beach litter baskets Driveway access for authorized vehicles
First Street	√	√		Picnic table
Second Street			√	Pet waste bags
Third Street	√	√	√	Dune walkover Pet waste bags Shower
Fourth Street		√		Picnic Table Shower Pet waste bags
Fifth Street	√	√	√	Pet waste bags
Sixth Street	√	√	√	Dune walkover Shower Pet waste bags
Seventh Street		√	√	Driveway access for authorized vehicles Shower Pet waste bags



Access Location	Parking	Bike Rack	Bench	Additional Amenities
Eighth Street				Pet waste bags
Tenth Street	√	√	√	Dune walkover Beach litter baskets Shower Pet waste bags
Eleventh Street	√	√	√	Dune walkover Shower
Twelfth Street			√	Shower
Thirteenth Street	√		√	Dune walkover Shower
Fourteenth Street	√	√	√	
Fifteenth Street	√	√		Driveway access for author-
Sixteenth Street		√		Dune walkover
Dewees Avenue				
Eighteenth	√	√		Dune walkover Shower
Nineteenth Street	√	√	√	Shower Beach litter baskets
Twentieth Street	√	√		Dune walkover

**Recommendations:**

Discourage and remove landscaping at beach accesses that create the image of private property or has the effect of appropriating public property for private use.

Reduce or consolidate signage at beach accesses

Create consistent hardscape and landscapes for all beach accesses

All enhancements, hardscapes or improvements should be approved by the city manager or designee



## 3.3 Bull Memorial Park

**Historical Background:** The land now considered Richard Bull Memorial Park was purchased from the Florida East Coast Railway in the 1930's and became the site of the first Town Park and Town Hall after the Town of Atlantic Beach was incorporated in 1926. On May 24, 1944 the park was dedicated in memory of Richard Bull Sr., a pilot in the United States Navy who was killed over the Pacific Ocean during World War II while conducting a reconnaissance flight of an enemy carrier on February 5, 1942. Mr. Bull was later posthumously awarded the Distinguished Flying Cross by Secretary of the Navy Frank Knox on behalf of President Franklin Roosevelt. Richard's father, Harcourt Bull Sr., was a pillar in the early Atlantic Beach community and was appointed as the first mayor of Atlantic Beach by Florida Governor John Martin in 1926. Harcourt Bull Sr. died as a result of injuries from an automobile accident in 1943, but the Bull family's influence on Atlantic Beach continued with Florence Bull, Harcourt's widow, maintaining various Bull corporations in the city and with George Bull Sr., Richard's brother, developing much of Atlantic Beach including the Selva Marina Subdivisions, Selva Marina Gardens, and Sevilla Condominiums.



ATLANTIC BEACH TOWN HALL  
1933



ADELE GRAGE CULTURAL CENTER  
RENOVATION PROJECT

NEWSLETTER  
June 30, 2001



ADELE GRAGE  
CULTURAL CENTER  
2001

Our fund-raising efforts to date have been very successful. We have raised \$32,000.00 from residents of our community and have commitments of \$85,000.00 from several government agencies.

We have received a letter from our accounting firm Purvis, Gray & Company acknowledging that these contributions are tax-deductible according to Section 170(c)(1), as this was a concern to some of you.

Two resolutions were introduced and passed this month related to this project.

The first (01-12) will protect the future use of the facility. Upon completion of the renovations, rooms designed for community purposes shall remain and continue to be used in accordance with the architectural design and shall not be converted or used for any other purpose.

The second (01-13) will change the name of the facility to the Adele Grage Cultural Center upon completion of the renovation.

Both of these resolutions had unanimous support of the Commission.

We are excited about the progress that has been made, but we still have a way to go. Please support this first ever community fund-raising project. Kelly Elmore said it best, "With the completion of these renovations the City will possess a truly unique and treasured piece of public infrastructure. Not a monument or architectural edifice, but a working, functional and beautiful cultural center, open to all, in the heart of our city and reflective of what is in our hearts as a community."

Bull Park remained the site of Town Hall until 1991 when city functions and offices moved to the current location of 800 Seminole Road. Following the move, the old Town Hall building was renamed the Adele Grage Community Center in honor of longtime City Clerk Adele Grage. In the late 1990s and the early 2000s, a master plan for the park was created and implemented resulting in upgrades to landscaping and playground equipment as well as a new amphitheater area, new parking, and open space for events. In 2002, Adele Grage Community Center was renamed again to Adele Grage Cultural Center following major renovations that added community rooms, a resource center, gallery, verandas and new restrooms. On June 24, 2019, the former Commission Chambers at Adele Grage Cultural Center were named "Gulliford Hall" after former Atlantic Beach mayor and Commissioner Bill Gulliford. Mr. Gulliford also served as a Jacksonville City Council member until June 25, 2019.



# RICHARD BULL MEMORIAL PARK



The name for Richard Bull Memorial Park comes from Richard Bull, Sr. of Atlantic Beach (1914-1942). A pilot in the United States Navy, he was killed over the Pacific Ocean during World War II while conducting a reconnaissance flight of an enemy carrier on February 5, 1942. Bull was posthumously awarded the Distinguished Flying Cross by Secretary of the Navy Frank Knox on behalf of President Franklin Roosevelt.

Richard Bull, Sr. was just an infant when he came to Atlantic Beach from New York City. His father—Harcourt Bull, Sr., a lawyer by trade—was a wealthy man whose business ventures brought him and his family south. In May 1913, Henry Flagler's Florida East Coast Hotel Company sold the struggling Continental Hotel and its land holdings northward to Mayport to the Atlantic Beach Corporation, a group of New York venture capitalists that included Harcourt Bull. By 1916, the Bulls were Atlantic Beach residents. That same year, however, the Atlantic Beach Corporation went bankrupt. Harcourt Bull, Sr. engaged in a lengthy legal battle with W.H. Adams, Sr., another prominent Atlantic Beach businessman, over ownership of the hotel and its property. Adams eventually won but Harcourt Bull, Sr. remained a pillar of Atlantic Beach business and society.



When the Town of Atlantic Beach was incorporated in the mid-1920s, Florida Governor Jake Martin appointed Harcourt Bull, Sr. its first mayor. Defeated in the 1926 mayor election, his political career was short-lived but he continued to have a loud voice in town matters due to his large land holdings.

Richard Bull, Sr.'s death in 1942 dealt the Bull family a tremendous blow. And on September 9, 1943, Harcourt Bull, Sr., sustained serious injuries in an auto accident and died four days later. That did not signal the end of the Bull family's influence in Atlantic Beach, however. His widow, Florence, maintained various Bull corporations in the city until her death in 1960. Richard's brother, George Bull, Sr., was a real estate developer responsible for the construction of Salvo Marina, Seville Gardens, and Salvo Marina Condominiums.



1 Richard Bull, Sr., Lieutenant Junior Grade, United States Naval Reserve, ca. 1941.

2 Harcourt Bull, Sr. in the early 1900s.

3 Residence of Harcourt Bull, Sr., 47 1/2th Street, Atlantic Beach, FL.

4 George Bull, Sr., youngest brother of Richard Bull, Sr., with his son Fred Wilson in front of Atlantic Beach City Hall (now the Adelle Griggs Cultural Center), location of Richard Bull Memorial Park.



## Existing Conditions/Inventory:

### GENERAL

Address: 716 Ocean Boulevard  
Park Type: Active  
Size: 1.44 acres  
RE#: 170235-0000  
Parking: 26 spaces  
Bicycle: 1 bicycle rack

### AMENITIES

- 1 Tennis Court
- 1 Basketball Court (half court)
- 1 Playground (Shaded)
- 1 Swing set (4 swings, 1 is ADA)
- 9 Benches
- 1 Grill
- 1 Water Fountain
- 1 10' by 10' Covered Area
- 1 Tetherball Pole
- 1 Bathroom
- 2 Trash Cans



## Community Input:

### 2018 Public Workshop comments

- Adele Grage needs better signage with lights for events like Song Writers, Artisan fare, etc.
- Sculpture Park, UNF
- Marked parking spaces
- Marquee sign



## Staff Input:

- ⇒ Resurfacing tennis courts in 2020
- ⇒ Added pedestrian lighting to the sidewalk across the center of the park.
- ⇒ Recently updated the flagpole



## Recommendations:

I. Consider repurposing the tetherball court, which does not appear to be used much. This area is roughly 100 square feet and could be repurposed into different uses such as a small splash pad, demonstrative garden or vegetation area, covered seating, etc.

II. Add bicycle parking at entrances and other visible locations. Currently, there is one bicycle rack near the entrance to the playground that can be hard to see. Each entrance and other commonly used area should have a bicycle rack. Alternative bike rack designs that fit the character of this park should be considered.



III. Consider relocating the postal drop off box in order to create additional parking spaces at the park. An estimated three additional parking spaces could be added. Beachgoers and events at Adele Grage often lead to the existing parking spaces at or near Bull Park quickly filling up.



IV. Add a historical marker at the Adele Grage Cultural Center, similar to the one installed at the Continental Hotel site. The marker could display the history of the building as the City's first town hall and help educate both residents and visitors and preserve this history.





## Recommendations:

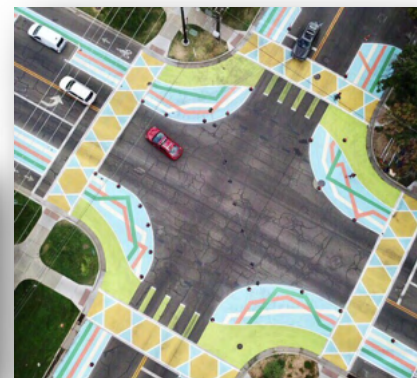
V. Consider moving the curb and sidewalk along 7th Street north to create room for on-street parking while maintaining two lanes of traffic on 7th Street. The sidewalk could then be moved to the north side of the existing palm trees with parking on the south side of the palm trees.



VI. Improve crosswalks at the East Coast Drive and Ocean Boulevard intersection with 7th Street by installing “intersection treatments”. These two intersections experience high usage of bicyclists and pedestrians due to their proximity to the park and the beach. As such, the intersections need to be clearly marked and grab drivers’ attention due to minimize incidents and increase safety.

Intersection treatments include:

- ♦ Minimizing crossing distances by reducing the curb radius and extending curbs.
- ♦ Pedestrian crossing signals
- ♦ High visibility crosswalks
- ♦ Lighting and illumination



### 3.4 Donner Park

**Historical Background:** Donner Park has been a part of the Atlantic Beach parks system for decades, beginning in the 1950's when E.H. Donner sold a roughly one acre parcel of land to the Town of Atlantic Beach to be used as a public park and/or recreational playground. During this time, E.H. Donner was a large landowner and influential resident in Atlantic Beach who owned and subdivided much of the land around the current sites of both Donner and Jordan Parks. In 1940, he dedicated a road to the Town of Atlantic Beach at the southern end of "Donner's Subdivision" that was then designated as "Donner's Road" by the Commission. In 1977, Roberts Mount Pisgah AME Church sold the City a roughly one half acre parcel of land adjacent to the original parcel obtained from Mr. Donner to also be used as a public playground. The remaining land that currently makes up Donner Park was acquired by the city in the early 1990s through several separate land purchases.

In 1996, after years of efforts, the Donner Park Community Center was completed to provide local children with after school and educational programs. Marcia Gail Baker was the activities director for the Donner Park Community Center at this time and, with the help of Atlantic Beach Director of Recreation Timmy Johnson, assisted in getting a community center at Donner Park. In May of 2014, the Donner Park Community Center was renamed the Gail Baker Community Center to commemorate Ms. Baker's years of service as the community center's director as well as her contributions to the local children in the community.

Large improvements to the park, including two tennis courts and sidewalks, were constructed in 2009 with funding from the Community Development Block Grant (CDBG) program. A few years later in 2012, the western parking lot was completed, also funded by the CDBG program.





## Existing Conditions/Inventory:

### GENERAL

Address: 2072 George Street  
Park Type: Active  
Size: 4.99 acres  
RE#: 172246-0000  
Parking: 35 spaces  
Bicycle: 2 bicycle racks

### AMENITIES

- 1 Tennis Courts
- 6 Pickleball Courts
- 1 Playground
- 3 Covered picnic seating areas
- 2 Basketball Courts
- 1 Multi-purpose Field
- 1 Baseball Field
- 1 Bathroom
- 12 Benches
- 3 Grills
- 1 Water fountain
- 1 Garden- Ms. Gail's Garden (two raised planting boxes)



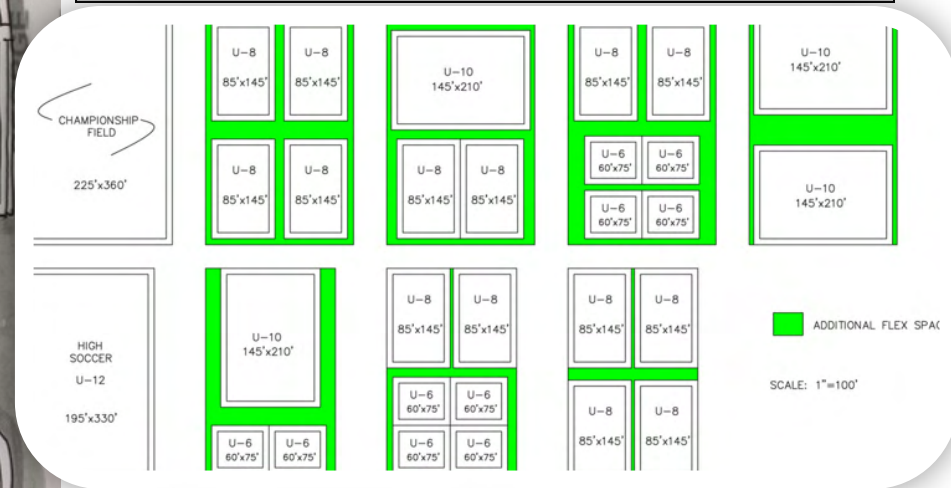


A hand-drawn site plan for a recreational area located along Dutton Island Rd W. The plan is divided into several distinct zones and facilities:

- Top Left:** A grey rectangular area representing a parking lot or paved zone.
- Top Center:** A green rectangular area labeled "PICKLEBALL COURTS [4]".
- Top Right:** A blue rectangular area labeled "BIKE TRAFFIC SAFETY COURSE".
- Far Right:** A green area labeled "PUMP TRACK" with a dotted boundary.
- Center Right:** A large orange circle labeled "EXISTING PLAYGROUND".
- Center:** A small pink square labeled "BOCCE" and a small green square labeled "PAVILION".
- Bottom Center:** A large green rectangular area labeled "PLAY FIELDS" with a dashed oval in the center.
- Bottom Right:** A blue rectangular area labeled "INTERACTIVE YOUTH PROGRAM SPACE".
- Far Right Edge:** A green area labeled "BUTTERFLY GARDEN" and a yellow area labeled "PROPOSED PARKING".
- Bottom Right Corner:** A grey structure with three circular openings, possibly a restroom or utility building.

The plan uses various colors (green, blue, orange, pink, yellow, grey) to distinguish between different types of spaces and facilities. Dotted lines indicate boundaries or specific features within the fields.

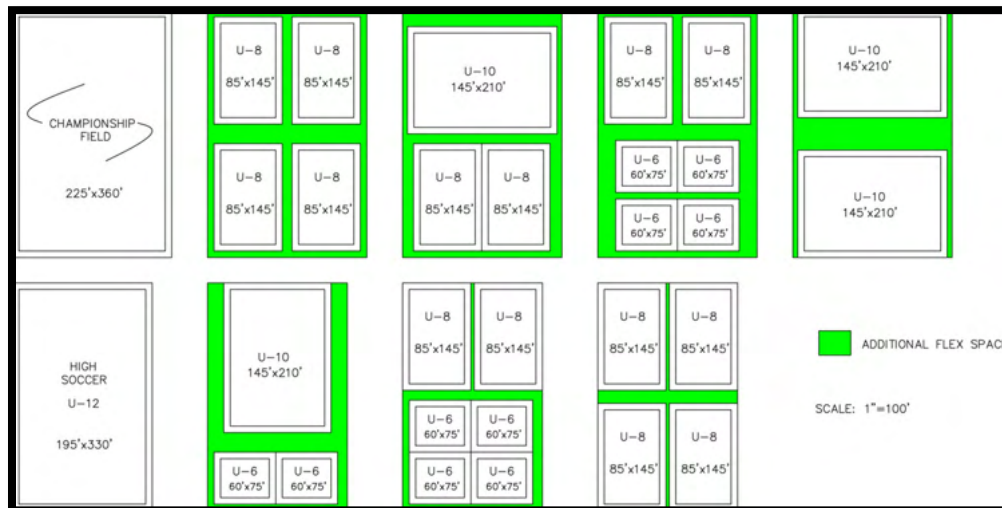
- ⇒ Expand multi-use fields (soccer, flag football), keep baseball diamond but remove pitchers mound
- ⇒ Move existing bleachers and add bleachers for multi-use fields (capitalize on shade areas)
- ⇒ Bocce court
- ⇒ Provide seating for pickle ball/bocce court
- ⇒ Add shade trees around the restroom building for multi-use
- ⇒ Drinking station at pickle ball court restrooms
- ⇒ Remove court and provide youth activities (potential splash pad)
- ⇒ Provide on-street 90 degree parking
- ⇒ Art mural option for either pump station wall or buffer wall
- ⇒ Planting areas around community center

ASLA  
FLORIDA



## Recommendations:

- I. Consider expanding the multi-use field by removing the pitchers mound and fencing on the baseball field. Since the baseball field does not experience high usage, this would provide additional field area for visitors to play soccer, football, etc. The baseball field and the batting cage total about 45,000 square feet.



## Recommendations:

II. Consider constructing a walking/running path along the perimeter of the park, similar to the path in Russell Park. Planting shade trees and installing exercise stations along the path should also be considered. This will add another activity for visitors of Donner Park with minimal impact to the existing or proposed facilities.



Path at Russell Park



III. Add bottle filling stations near the pickle ball and basketball courts. This request was made by a few participants in the public workshops.

IV. Add shade structures or shade trees near the pickle ball courts and restrooms to provide pickle ball players a shaded place to rest.





## Recommendations:

V. Replace the chain link fencing along the southern and western perimeters of the park with a wood fence. Wood fencing would provide a softer and more appealing aesthetic and would screen the adjacent industrial uses and equipment to the south.

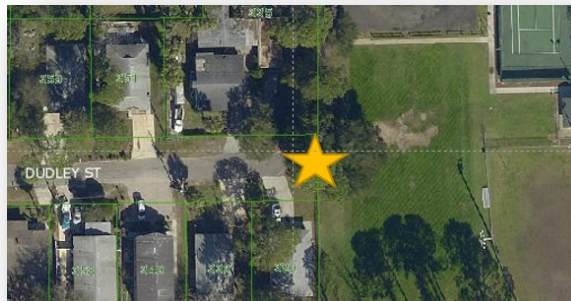


VI. Plant shrubs and/or trees along the perimeter of the park that borders the industrial uses to help screen the equipment and vehicles.

VII. Plant shrubs and/or trees or install solid fencing between the eastern basketball court and the adjacent parking lot to prevent basketballs from going into the parking lot and street. The same improvements are recommended between the multi-use field and the parking lot to prevent soccer balls from entering the parking lot.



VIII. Improve the entrance to the park from Dudley Street (west part). The current entrance is hidden and very narrow, not welcoming to residents of this area. Removing the fencing, adding bicycle racks, adding a sign, and widening the path into the park are options to consider.





## 3.5 Dutton Island Preserve

**Historical Background:** Dutton Island Preserve, formerly known as Pine Island, was owned by Walter “Wally” E. Dutton before he sold the land to the City of Atlantic Beach to be used as a natural preserve in 1998. Prior to the sale, Dutton Island was planned for the development of single family homes, threatening the natural beauty of the island. The pending development prompted several organizations, administrations, and citizens to begin efforts to preserve the island. Although the island was located within the City of Jacksonville’s jurisdiction at the time, Atlantic Beach mayor Lyman Fletcher contacted Mr. Dutton in 1994 to discuss the possibility of the City of Atlantic Beach acquiring the island. For the next four years, the City of Atlantic Beach, the City of Jacksonville, the Florida Communities Trust, and numerous other dedicated organizations and citizens worked to preserve Dutton Island. The City of Atlantic Beach’s portion of the island was purchased using Florida Barge Canal funds with no Atlantic Beach tax money being used.

For the next couple of years following the purchase, discussion was held on what to name the new preserve. After considering naming the island after Bartolome de Castro y Ferrer, the owner of a large Spanish land grant that included the island, the City Commission chose to name the island after Walter Dutton in 2000. After developing the island into a beautiful park with trails, kayak launches, fishing piers, pavilions, and more, the Dutton Island Preserve was officially opened in October, 2002. One month later, the City Commission officially named a pavilion “The Lyman T. Fletcher Pavilion” for Mr. Fletcher’s valuable contributions to acquiring and preserving the island.

In August 2019, the City Commission passed Resolution 19-39 designating the portion of Dutton Island Road West inside the Dutton Island Preserve from the front gate westbound to the front parking lot as “U.S. Army SFC Leroy Everett Memorial Parkway” in honor of Sergeant First Class Leroy Everett, who gave his life for his country during the Vietnam War. Leroy Everett was born and raised on Mealy Lane in Atlantic Beach and often played in Dutton Island Preserve as a child.



## Existing Conditions/Inventory:

### GENERAL

Address: 1600 Dutton Island Way  
Park Type: Passive  
Size: 31.86 acres  
RE#: 179290-0000  
Parking: 24 spaces  
Bicycle: None

### AMENITIES

- 1 Bathroom (Mens & Womens)
- 2 Outdoor showers
- 1 Water Fountain
- 1 Covered Pavilion (15'X25') with 3 picnic tables
- 8 Trash Cans (mobile)
- 1 Grill
- 1 Memorial plaque to Mayor Fletcher
- 1 Covered Pavilion with 1 picnic table (Marker #3)
- 1 Bench and picnic table (Marker #5)
- 2 Kayak Launches (1 ADA)
- 1 Fishing Pier
- 2 Fish cleaning stations
- 1 Covered fishing area (10'X10')
- 2 Covered Pavilion (10'X15') each with 1 picnic table
- 1 Fire Pit with grill

Multiple internal trails that traverse the island





## Community Input:

### 2018 Public Workshop comments

- “Naming Opportunity”
- “Floating Dock”
- “Add trail around pond with native plants”
- “Public art Bat boxes” (twice)
- “Non-chemical insect control”
- “Maintain natural landscape, no structures”
- “Benches Signage/directional trails”
- “Educational markers along a trail like Castaway Island” “(ditto)”
- “Benches on loop trail” “(Yes!)”
- “Form “Friends of Dutton Island” as a neighborhood association/ park support group”
- “Get canoe/kayak concessionaire at Dutton Island”
- “Eco restoration, more maintenance” “(ditto)”
- “Rename pond”
- “More trail, maintenance, natural grass plating to enhance trails, bio swales in areas that flood”

### 2019 Public Workshop comments

- “Water trails”
- “Trail maintenance”
- “Bugs are really bad”
- “Bat boxes”
- “Camp sites need quality maintenance”
- “Platform up camping for coastal flooding” (elevate camp sites)
- “Friends group for Dutton Island”
- “Design parks for resiliency!”
- “Need trash bins at trailheads”

## Staff Input:

- ⇒ In process of repairing two floating docks
- ⇒ North FL Land Trust wont allow any more boardwalks or piers
- ⇒ Waiting on grant to remodel/update showers, add 8 picnic tables, 4 grills, and several benches
- ⇒ Updated bat boxes
- ⇒ Updated/redesigned camping numbering
- ⇒ Added a fire pit area to camp site #2
- ⇒ Several dead pine trees throughout the park are difficult to remove
- ⇒ Hard to maintain due to the size and the vegetation grows quickly
- ⇒ Problems with the homeless

**Goals for preserve:**  
**Marsh Master Plan Update/progress, completed projects,**  
**land trust problems, etc.**  
**1997 Management Plan**

1997 Management Plan priorities

- Protect existing undisturbed environment

- Restore disturbed areas to conditions consistent with undisturbed areas

- Provide safe access corridors to permit public enjoyment of the various natural habitats while protecting those habitats

- Provide educational programs to the public about the various habitats found on the site

Marsh Master Plan “Future uses of the site should be limited to passive resource-based recreational activities such as hiking trails, bird and wild-life observation areas, picnicking, primitive camping, fishing areas, swimming areas, canoe/kayak/crew launching, and interpretative/environmental education.”

## Recommendations:

- I. Add benches and wayfinding signage along the trails and at the entrance of the preserve. Adding both benches and signage to the city's trails were common requests in the online survey as well as the public workshops.
- II. Continue to maintain and replace educational/interpretive signage along the trails, while looking for opportunities to add new signage. Educational signage was a common request from our public outreach and is also one of the recommendations from the Marsh Master Plan for Dutton Island Preserve. Examples include plant identification and historical informational signage.
- III. Elevate camping sites as needed to prevent flooding damage.
- IV. Install bicycle parking at the preserve entrance and at the two fishing piers.
- V. Install recycling bins, cigarette butt receptacles, and fishing line recycling at the two fishing piers.
- VI. Continue to maintain, replace and install new bat boxes.
- VII. Continue to ensure seating and shade opportunities at the fishing piers, overlooks, and kayak launches.
- VIII. Add dog-friendly amenities such as dog waste bags and dog water fountains.
- IX. Install trash bins at all train entrances.
- X. Trail surfacing/edging could be installed to increase accessibility and define the trail edges.





## 3.6 Fairway Villas Park

**Historical Background:** Fairway Villas Park was donated to the City of Atlantic Beach as part of the approval for the Fairway Villas development. In late 1982, the City was presented with the first plans to develop Fairway Villas. Following a change in land ownership and in design proposals, the City again reviewed development plans for Fairway Villas in 1983. In order to meet the minimum required “green space” for the new neighborhood, the developer agreed to donate one lot to the city as a playground/park in 1987.

### Existing Conditions/Inventory:

#### GENERAL

Address: 2182 North Fairway Villas Lane  
Park Type: Passive  
Size: 0.18 acres  
Parking: None  
Bicycle: None

#### AMENITIES

1 Picnic bench  
1 Trash can

### Staff Input:

- ⇒ Receive complaints about keeping the grass cut
- ⇒ Problems with the homeless

### Recommendations:

- I. Reach out to neighborhood residents to gather feedback about installing amenities such as a grill, playground, and picnic benches.
- II. Add signage to inform residents and visitors that this lot is a city park and is open to the public.

### Community Input:

#### 2018 Public Workshop comments

- “New concrete fence”
- “Public art”
- “Playground”
- “Grill”



## 3.7 Frazier Park

**Historical Background:** Frazier Park was created in 1949 with Ordinance No. 128 which designated and named “that part or portion of the street in the Town of Atlantic Beach known as 'The Plaza' lying between Old Sherry Drive and East Coast Drive and not used or devoted to public travel” as Frazier Park in honor of Cecil Ray “C.R.” Frazier’s lengthy service to the city. C.R. Frazier not only served as the first Town Manager of Atlantic Beach from 1944 to 1949, but also served as the Town’s Clerk, Tax Collector, Health Officer, and Building Inspector in the 1930s and 1940s. In 1986, the City Commission authorized the construction of a dedication marker for Mr. C.R. Frazier to be erected in Frazier Park.



### Existing Conditions/Inventory:

#### GENERAL

Address: 300 block of Plaza  
Park Type: Passive  
Size: 0.6 acres  
Parking: None  
Bicycle: None

#### AMENITIES

1 Statue “In Search of Atlantis”  
1 Plaque honoring C.R. Frazier,  
the first Town Manager

### Staff Input:

- ⇒ Main concern has been keeping the grass cut
- ⇒ Added picnic tables in the past but they were removed at residents’ request

### Community Input:

#### 2018 Public Workshop comments

- “Benches”
- “Public art”

### Recommendations:

- I. Continue to maintain existing trees and look for opportunities to restore canopy where appropriate.
- II. Consider adding trash cans and dog waste bags



## 3.8 Howell Park

**Historical Background:** Howell Park is named after former mayor of Atlantic Beach William S. “Billy” Howell in 1976 for his dedicated service to the community. Mr. Howell was first elected mayor in 1957 and served two terms. After a brief hiatus, he again served as mayor from 1965 to 1981 and then one last term beginning in 1983. In total, Mr. Howell served as mayor of Atlantic Beach for 26 years, earning the designation as the city’s “Perennial Mayor.” In 1989, Mr. Howell received the E. Harris Drew Municipal Official of the year Award from the Florida League of Cities for his contributions to the city. Mr. Howell passed away in 2015, leaving behind a great legacy in Atlantic Beach.

Prior to becoming Howell Park, in the 1950's, efforts to turn the area north of the elementary school and between Sherry Drive and the Plaza into a public park began. Over the next two decades, the city worked to acquire the necessary land for the creation of both Howell and Jack Russell Parks. In the 1970's, the city received federal assistance for improvements to Howell Park that included trails, benches, bridges, landscaping and more.



## Existing Conditions/Inventory:

### GENERAL

Address: 810 Seminole Road  
Park Type: Passive  
Size: 9.64 acres  
Parking: 5 spaces  
Bicycle: None

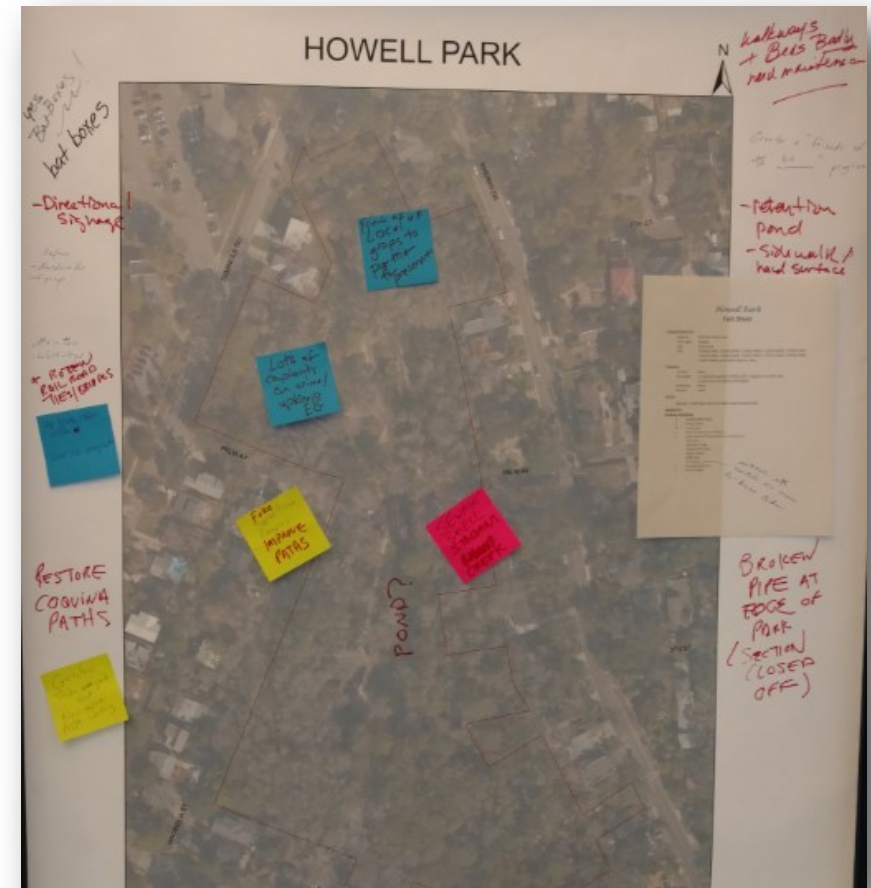
### AMENITIES

- 1 Sand bottom trail
- 4 Picnic Tables
- 12 Trash Cans
- 7 Benches (non-picnic tables)
- 6 Informational Plaques (plus one blank one)
  - Oak Tree
  - Sherman Creek
  - Howell Park Pond
  - Slider Turtles
  - Baffle Box
  - Air Potato
- 3 Dog bag dispensers
- 5 Wood bridges

## Community Input:

### 2018 Public Workshop comments

- “Bat boxes!” (twice)
- “Directional signage”
- “Replace boardwalks, signage”
- “Replace rotten railroad ties/bridges” (twice)
- “Clear out overgrowth”
- “Restore coquina paths” (three times)
- “Gazebo”
- “Thin out junk”
- “New wood”
- “ADA parking”
- “Friend of H.P. Local groups partner for preservation” (twice)
- “Lots of complaints on crime/upkeep”
- “Fake surveillance cameras”
- “Pond?”
- “Sewage smell, stagnant creek”
- “Public Art”
- “Walkways and beds badly need maintenance”
- “Retention pond”
- “Sidewalk/hard surface”
- “Containers so residents can remove air potatoes, ex-Ravine Gardens”
- “Broken pipe at edge of park (section closed off)”



### Staff Input:

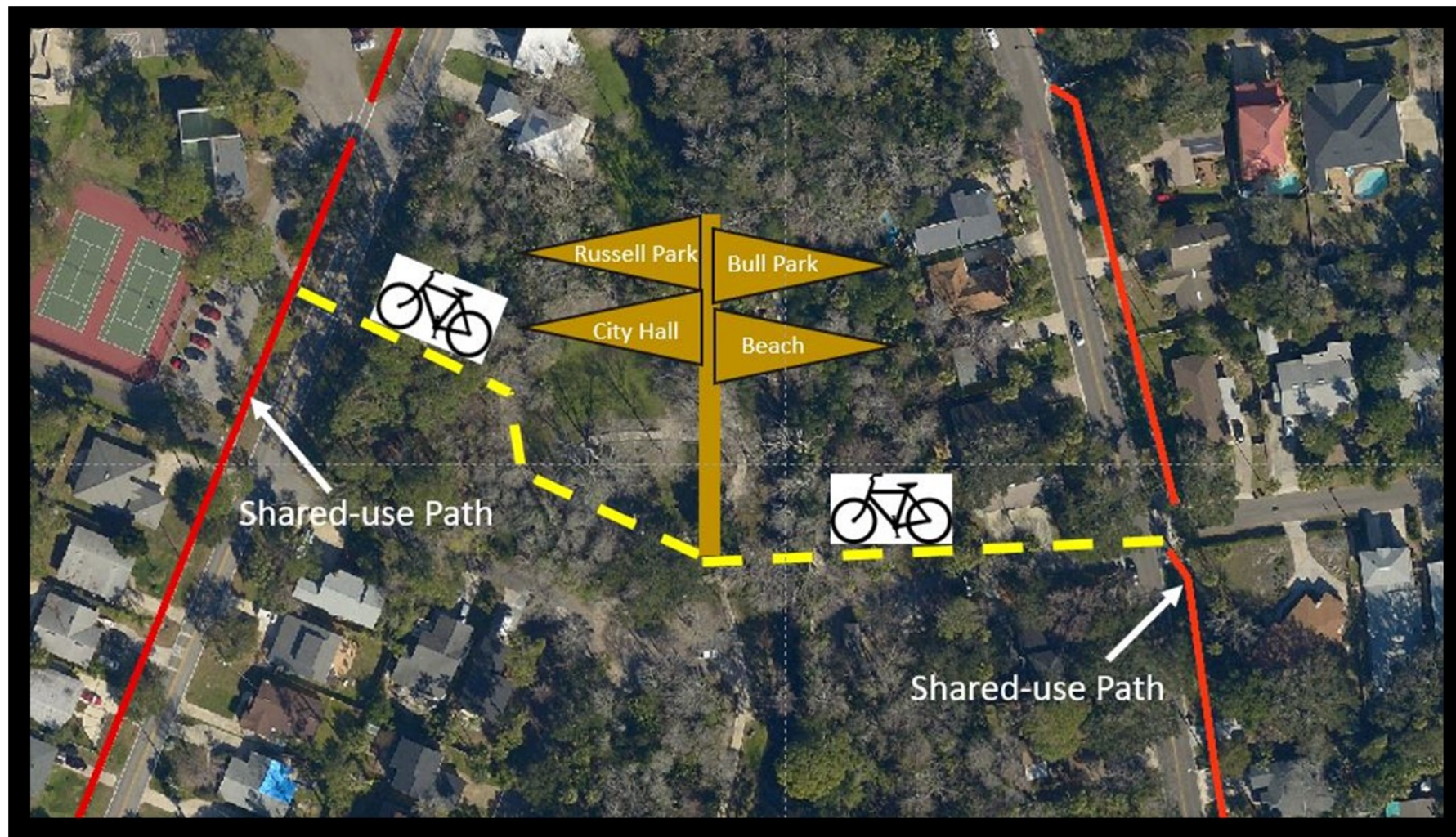
- ⇒ Updated bat boxes
- ⇒ Must clean ditch every 3-4 years
- ⇒ Recently planted 40 trees
- ⇒ Cleaned up around turtle pond and added the ability to add water as needed
- ⇒ Updated bridges
- ⇒ Added new picnic tables
- ⇒ Replaced several railroad ties
- ⇒ Would like to add a cabana gazebo for weddings and events





## **Recommendations:**

- I. Continue to maintain and update educational signage
- II. Install a gazebo for wedding, birthdays, and other events.
- III. Add bicycle parking at all entrances.
- IV. Plant landscaping around the lift station to screen the view and to capture odors.
- V. Consider adding vegetation and/or rocks to stabilize the creek surface
- VI. Install wayfinding signage around trailheads and entrances.
- VII. Create a pervious pavement or similar material bike path to connect Jack Russell Park to Bull Park and the Beach through Howell Park





## 3.9 Jack Russell Park

**Historical Background:** Jack Russell Memorial Park is dedicated to James L. “Jack” Russell, who served as Chief of Police for the City of Atlantic Beach from 1931 until his death in 1961. The official dedication of the park took place on August 4<sup>th</sup>, 1966 with a memorial plaque being placed near the newly created baseball field. Plans to turn this area into a city park and playground began in the 1950's as a result of increasing development in the area and the desire to acquire park land and a playground for children before the land was no longer available. Over the next two decades the city worked on acquiring the necessary land for the creation of both Jack Russell and Howell Parks.

In 1961, the City Commission was presented with a map showing tennis courts and a baseball diamond behind the fire station (current police/fire station). With agreement to move forward with these plans, the city looked at how to fill the swampy land in this area at the time and decided to use material from the nearby sanitary landfill. By the end of the decade, a baseball field, two tennis courts, a concession stand and an indoor playroom had been constructed at the new park. During the 1970's, a second baseball diamond and new tennis courts were added to the park as well. In 1978, a master plan for the park was completed that included the development of a municipal complex, a baseball/football combination field, basketball courts, racquetball courts, fitness trails, shuffleboard courts and paved parking areas. By 1987, the parking lot was paved and plans for the new city hall were underway. In 1988, to set up a permanent tribute to the Bi-Centennial of the United States Constitution, the grassy median in the parking lot at Jack Russell Park was named the “Constitution Arbor.” Trees were planted within this median by the Atlantic Beach Garden Circle, Girl Scout Troop No. 46, and Boy Scout Troop No. 37. Over the next ten years, the new city hall was completed, the parking lot was extended to access Seminole Road, a T-Ball field was developed, and three new tennis courts were added to the park.

In 2001, in response to frequent skateboarding at Bull Park, the City Manager suggested installing a skate ramp at Jack Russell Park where the old restroom building was going to soon be torn down. Two years later, the Oceanside Rotary Club offered to raise \$50,000 for the construction of the skate park if the city would agree to name it “Oceanside Rotary Skate Park”, to which the city agreed. On June 28, 2004, roughly six months after the agreement, the Oceanside Rotary Club presented the city with a check for \$60,000 from their fundraising events for the skate park. With additional contributions, including \$35,000 from the City of Jacksonville, \$5,000 from Sandy Forsyth, and \$5,000 from Comcast, the new skate park was completed in early 2005. Tat Chan was the designer and used input from local skateboarders to include challenges for both beginning and advanced skillsets. Grindline was the construction firm and ended up building it larger than originally planned, at no additional cost, because they enjoyed the cause. The grand opening of the Oceanside Rotary Skateboard Park was held on May 14, 2005 and was attended by several hundred people.

## Existing Conditions/Inventory:

### GENERAL

Address: 800 Seminole Road  
Park Type: Active  
Size: 12.79 acres  
Parking: 152 spaces

### AMENITIES

- 6 Tennis Courts
  - 10' fencing on north and south sides, 6' on west, 4' on east
  - 2 covered areas each with picnic bench, water fountain, and trash can (extra picnic bench outside of one of the covered areas)
  - 1 bench (resident supplied two other benches at eastern edge) (two people there at the time asked for more seating)
- 2 Racket ball Courts (covered with screen)
  - Storage area attached
  - 1 water fountain attached on west side
  - 1 bench
  - 1 trash can
- 2 Fields (used for soccer, football, etc.)
  - 2 soccer goals
  - not fenced in
- 1 Playground (includes tire pit area and playset area)
  - 4 benches (3 around playset and 1 by tire pit)
  - 1 covered picnic table
  - 1 warning sign for parents
  - 1 light post directed at playground
- 1 Toddler Playground (playset and swingset)
  - 2 ADA swings and 2 enclosed swings for younger children)
  - 1 warning sign for parents
  - 2 benches
  - 1 trashcan





## Existing Conditions/Inventory:

### AMENITIES

- 1 Stand along Swingset (4 swings for older kids)
- 1 Full Size Basketball Court (painted but dimensions are not accurate)
  - 2 light poles directly aimed at court
  - 1 covered picnic table
- 1 Half Court Kids Basketball Court (5.5 foot tall rim)
- 1 T-ball baseball field
  - 2 trash cans (one behind home and one behind center field fence)
  - two un-covered dugouts
  - 2 bleachers with 3 rows of seating, both un-covered
- 2 Little League Baseball Fields
  - Screening connected to concession stand to protect fans from foul balls
  - 2 Scoreboard behind center field fence (one each field)
  - Elevated deck area with railings between fields
  - Yellow painted foul poles, each field has two
  - 4 large light poles directed at each field (8 total aimed at baseball fields)
  - Both fields fenced in (northern field has 6' outfield fencing while southern field has 4' outfield fencing) (northern field has advertising on outfield fencing)
  - 4 mobile trash cans
  - 4 bleachers (northern field has 5 row bleachers, southern field has 3 row) (two bleachers are covered, one at each field)
  - Northern field has flag pole behind center field fence
  - Northern field has grass infield, southern has clay infield
  - 5 total bullpen areas (1 at northern field-by first base, 4 at southern field-1 behind right field and 3 by third base)



## Existing Conditions/Inventory:

### AMENITIES

- 1 Batting Cage (Divided into 4 separate batting cage areas by netting- there can be 4 batters & pitchers at one time separated from one another)
- 1 Concession Stand with Press Box above)
  - storage bin/box attached to bldg.
  - 6 mobile trash cans
  - 1 water fountain
  - 1 memorial plaque for concession bldg.
  - 4 ordering windows/openings (3 on west side, one on south)
- 2 Men's Bathrooms (one at racketball courts and one at concession stand)
- 2 Women's Bathrooms (one at racketball courts and one at concession stand)
- 1 Skate Park
  - 8 foot fencing along southern and western sides, 6' fencing around remainder
  - Trash can at entrance
  - Rules of skate park sign at entrance...deteriorating
  - memorial orange tree planting with plaque at SE corner
  - Covered bleachers, 3 rows
  - Large concrete "bowl" area
  - Metal railing along majority of bowl area, for people standing on top
  - 2 "No Helmet No Skate" Signs
  - "Oceanside Rotary Skate Park" sign on concrete at entrance
  - 2 light posts, one with 2 cameras attached
- 1 X by X covered Picnic Structure
  - 6 picnic benches
  - 4 mobile trash cans
  - 2 grills
  - 1 water fountain
- 2 Memorial monuments (one to James Russell and one to "Combat Team Camp", both located along northern sidewalk)
- 2 Bike racks (one near covered picnic structure and one near skate park entrance)
- 1 concrete vehicle access area that leads to concession stand
- stormwater ditch that runs between parking lot and park
- wood bridges that cross over stormwater ditch
- paved trail along southern and western perimeter (western side shaded, lined with oaks). 2 benches and 1 trash can along northern section. Trail links to sidewalk along northern side which is also shaded and lined with shade trees.
- 1 Decorative Manatee statue



## Community Input:

### 2018 Public Workshop comments

- "Bat boxes"
- "Public art"
- "Remove pine trees for soccer field"
- "Naming opportunities for ball field?"
- "Color palette for buildings-maybe new color?"
- "Bike loop, more bike racks" "(Yes!!)"
- "Maintain/pressure wash skate park"
- "Update mural on racquet ball court"
- "Playground equipment for older kids, i.e. challenging monkey bars, hand to hand, etc."
- "Repurpose racquetball courts"
- "All street style skate features"
- "Need to spend money improving what we have vs. doing new things-this park could use an update"
- "Renovate skate park"
- "Improve grass outfield-baseball"

### Staff Input:

- ⇒ Added ADA mulch to playground and tire area
- ⇒ Resurfaced walking paths
- ⇒ Making a walking path connection from Clipper Ship Lane to existing walking path
- ⇒ Added 3 new cabanas
- ⇒ Added new LED lights to tennis lights and moved old lights to skate park
- ⇒ Added new sprinkler system and grass to soccer fields
- ⇒ Budgeted the removal and reinstallation of basketball courts
- ⇒ Recommend changing one racquetball court to a pickle ball court
- ⇒ Recommend adding a children's splash pad
- ⇒ Need repairs to skate park
- ⇒ Bathroom remodel to start within a month
- ⇒ Need new fence netting on baseball fields

### 2019 Public Workshop comments

## RUSSEL PARK

- INCREASE 4' PATH TO 8' + LIGHTING
- ADD FITNESS STATIONS
- ART STUDIOS @ RACQUET BALL COURTS\*
- ART GARDEN - FOR CRAFT / ART SUPPLY
- IMAGINATION PLAY SPACE / NATURE PLAY ~ PONDLESS WATER FEATURE
- NATIVE PLANTS (*right plant right place*)  
- "XERISCAPE" GARDEN  
- DROUGHT-TOLERANT
- LIGHTING / SAFETY IMPROVEMENTS ALONG PATH
- BOTTLE REFILL
- SPLASH PAD
- BOCCI
- HORSESHOES
- SHUFFLE BOARD
- PRACTICE TENNIS COURT
- PING PONG
- CHESS
- DEMO GARDENS @ CITY HALL + GREEN INFRASTRUCTURE
- WAY FINDING (*how to get to T-Ball*) - retaining wall / re-grade
- MORE PARKING ESP @ TENNIS COURTS
- ~ or ~
- \* SAND VOLLEYBALL
- CLIMBING WALL / CLIMBING PLAY EQUIPMENT
- PARKING
- NATURE PLAY
- REGULATION SIZE SOCCER FIELDS @ WEST EDGE
- NATURAL COLOR PALLETTE FOR FENCES ETC.
- + BIKE RACKS
- YOUNGER KIDS SKATEPARK

# RUSSELL PARK

N





## Recommendations:

- I. Create rain gardens and bioswales along the drainage ditch and parking lot in the northeast area of the park
- II. Widen the existing sidewalks along Seminole Road and Plaza to
- III. Plant oak trees along the walking path to fill in missing link
- IV. Add bicycle parking at Seminole Road entrance by the tennis courts, entrance at
- V. Consider adding low-light and low-level lighting along walking path.
- VI. Consider adding exercise facilities along walking path
- VII. Consider repurposing racquetball court (i.e. multiple pickleball courts, additional parking, practice tennis court, volleyball court, shuffleboard, bocce ball, etc.
- VIII. Add benches by basketball court



## *Russell Park:*

- Art studio space /repurpose of racquet ball courts



**NPS RTCA**  
RIVERS, TRAILS & CONSERVATION  
ASSISTANCE PROGRAM  
[www.nps.gov/rtca](http://www.nps.gov/rtca)



**ASLA**  
FLORIDA





## *Russell Park:*

- Wall mural options at racquet ball courts



**NPS RTCA**  
RIVERS, TRAILS & CONSERVATION  
ASSISTANCE PROGRAM  
[www.nps.gov/rtca](http://www.nps.gov/rtca)



**ASLA**  
FLORIDA



## 3.10 Johansen Park

**Historical Background:** Preben Johansen Parkway was named after Preben Johansen in 1983 for his dedication and outstanding service rendered to the City of Atlantic Beach. Preben Johansen was first named an Atlantic Beach City Commissioner in 1957, a title he held until 1963 and again from 1967 to 1971 before serving as a Jacksonville City Council member for the following eight years. He would serve as an Atlantic Beach Commissioner again from 1981 until his untimely death in September 1982. In a 1982 Resolution by the City Commission, Mr. Johansen is commended for his faithful service and his dedication, diligence, perseverance, and personal sacrifice to further the interests of the community. Many members of the community also remember Preben Johansen as the spirited owner of the former Atlantic Beach landmark, Le Chateau Restaurant. After purchasing Le Chateau in 1959, Preben and his wife, Nina Johansen, successfully ran the restaurant which attracted notable customers like Liberace, Barry Goldwater, and various others.

In the 1950's and 1960's, prior to being named Johansen Park, this area was donated by the Selva Marina Realty Company to the City of Atlantic Beach to be used for "park and beautification purposes." The southern part of the park was donated as part of the Selva Marina Unit 2 subdivision in 1957 followed by the northern parts of the park as part of Selva Marina Unit 7 in 1969 and Unit 8 in 1972. In the 1990's, a plan to create a stormwater pond in Johansen Park was considered but was shut down following strong opposition in the community to removing trees and disturbing the Park's natural state.





## Existing Conditions/Inventory:

### GENERAL

Address: 1300 Seminole Road  
Park Type: Passive  
Size: 13.83 acres  
Parking: Available around perimeter of park

### AMENITIES

2 Heritage Trees  
4 Wood walking bridges over stormwater ditch (1 north of and 3 south of Country Club Ln)  
12 Benches  
2 Trash Cans  
3 Bat Boxes  
1 Brick monument along Seminole Rd with 2 recycle bins inside/on top of it.



## Community Input:

### 2018 Public Workshop comments

- "ADA Walking trail" (twice)
- "Activate"
- "Disk golf"
- "Physical activity stations"
- "Don't manicure!!"
- "Community wildlife NWF Habitat garden"
- "Pollinators"
- "Shelters"
- "Shade"
- "Native Plants-including understory as well as obvious tree replacements"
- "Art"
- "Challenging playground equipment"
- "Bat boxes"
- "Arboretum"
- "Garbage cans and benches"
- "More bridges"

### Staff Input:

- ⇒ Most people don't want changes to this park, they like it in its natural state
- ⇒ Added a new water fountain
- ⇒ Planted 78 trees in early 2019
- ⇒ Bridges could use some work
- ⇒ Need to ensure access to ditches for maintenance

### 2019 Public Workshop comments

JOHANSEN PARK					
	①	②	③	④	⑤
BENCHES		✓	✓		
TABLES / SMALL GATHERING		✓			
PIC-NIC			✓		
WAY FINDING			✓	✓	
PARK HOURS				✓	
DOG STATIONS * INTERNAL			✓	✓	
EDUCATIONAL SIGNAGE *			✓	✓	
PUBLIC ART			✓	✓	
ACTIVE PLAY	✓				
CROSS WALKS FROM SEMINOLE				✓	
COVERED PAVILION			✓		
possible topics * PILEATED WOODPECKER PETS + WILDLIFE					
** TRASH CANS					



2019 Public Workshop comments

# JOHANSEN PARK

	①	②	③	④	⑤
IMPROVE SENSE OF PUBLIC SPACE @ N. END	✓		✓	✓	
IMPROVE DRAINAGE:	.				
SOUTH (FESTIVAL)	*POND ✓		*POND ✓	✓	*NO POND ✓
CENTER	✓	✓	✓		
NORTH					
MAINTAIN FESTIVAL SPACE	✓	✓			
WALKING PATHS	.	.			
SOUTH	✓	✓	✓	✓	
CENTER	✓	✓	✓	✓	
NORTH					
VEGETATION - SWALE					
CLEAR @ SAFETY PLS		✓			
MAINTAIN (E) TREES				✓	✓
ADD SHADEY UNDERSTORY		✓			✓
BUTTERFLY / POLLINATOR		✓			✓
NATIVES			*HABITAT ✓		✓
FLOWERING PLANTS					✓
POCKET PARK @ NE EXTENSION (PARK)		✓			✓
FIX (E) PLANTER					✓
KEEP (N) END PASSIVE				✓	

\*AZALEA

# JOHANSEN PARK OFF SITE

	①	②	③	④	⑤
IMPROVE BIKE/ WALK ROUTES ON SELVA MARINA	✓		✓		
IMPROVE BIKE/ WALK ROUTES ON SATURIBA DR		✓	✓		
TO MARSH OAKS (S)		✓			



# Johansen Park:

- Dog stations
- Wayfinding signage
- Tables
- More benches
- Public Art
- Trash cans
- Butterfly / pollinator garden

Consider adding a coquina or pervious trail along the stormwater swale.



**NPS RTCA**  
RIVERS, TRAILS & CONSERVATION  
ASSISTANCE PROGRAM  
[www.nps.gov/rtca](http://www.nps.gov/rtca)



**ASLA**  
FLORIDA



## 3.11 JordanPark

**Historical Background:** Jordan Park is officially named “The Reverend William Holsey Jordan Park” in 1987 after Reverend William Holsey Jordan, a Georgia native and veteran of World War I who founded the Jordan Chapel C.M.E. Church in Atlantic Beach. Reverend Jordan retired from the Jordan Chapel in 1975 but remained an active member of the community and referred to as “one of the most distinguished citizens in Atlantic Beach.” He also served as President of the Beaches Ministerial Alliance, a member of the Atlantic Beach Black Chamber of Commerce, and a charter member of the Beaches Area Historical Society. Reverend Jordan passed away on Christmas Day in 1985.

Jordan Park was once a vacant parcel owned by the City of Jacksonville who, in 1979, passed a Resolution authorizing the City of Atlantic Beach to use the property in any manner that they so wished. In 1983, with funding from the U.S. Department of Housing and Urban Development (HUD), the city decided to build a basketball court on the property. In 1984, the City of Jacksonville deeded the property to the City of Atlantic Beach. Meetings with neighborhood residents suggested showed a desire for this park to serve as a “family park” with no baseball parks or soccer fields, but rather a place to have picnics and hold church events. Over the next several years, amenities including a kid’s basketball court, picnic shelters, lighting, and restrooms were added to the park.

In 2000, Beaches Habitat for Humanity offered to construct a multi-purpose building at Jordan Park to accommodate their after school program if the city agreed to supply the materials and allow them to use the office space. The city agreed and the Jordan Park Community Center was completed in 2001 with a ribbon cutting ceremony held on November 17. The Community Center was expanded in 2006 by Beaches Habitat for Humanity after the expansion of their after school program and then remodeled in 2013 to further enhance their after school program.



## Existing Conditions/Inventory:

### GENERAL

Address: 1671 Francis Avenue  
Park Type: Active  
Size: 2.22 acres  
Parking: 8 parking spaces

### AMENITIES

- 2 5' wide sidewalks thru park
- 1 Basketball Court (full court, painted)
  - 2 benches
  - 2 light posts directed at it
- 1 Covered seating area 15'X20'
  - 4 picnic tables
  - 1 grill
  - 1 bench just outside covered area
  - 1 mobile trash can
- 1 Covered seating area 15'X10'
  - 1 picnic table
  - 1 grill
  - 1 water fountain near it
  - 1 mobile trash can near it
- 1 Bathroom (mens & womens)(not including inside Community Center)
- 1 Memorial plaque along Francis St
- 1 Playground with equipment (mulch floor)
  - 2 benches
  - 1 warning sign
  - 1 trash can
  - 4 swings (no ADA)
- 1 Small basketball hoop about 6' tall
  - 1 trash can
  - 1 bench

### **Community Center Amenities (Jordan Park Community Center)**

- 3 Trash Cans (outside)
- 1 Bike artistic statue
- 1 USPS drop off box
- 1 Small garden in back
- 3775 Total Square Feet





## Community Input:

### 2018 Public Workshop comments

- “Retention”
- “Fence”
- “More signage, Public events”
- “Parking and signage for bike access”
- “Pump track-need public input” “(yes)”
- “Lighting”

## Recommendations:

- I. Update fencing and lighting
- II. Provide more public events

## Staff Input:

- ⇒ Added new play set within the last 2 years
- ⇒ Added new bike path
- ⇒ Resurfaced basketball courts
- ⇒ Periodically repair light at the rear of the park and it keeps getting shot out
- ⇒ Crime is a problem in the evenings

## 3.12 Marvin's Gardens

**Historical Background:** “Marvin’s Gardens” is a small triangular park located at the intersection of Dewees Avenue, Coquina Place, and Shell Street. The park is named after the former dog of the Sheppard's, longtime residents of the neighborhood. Part of the Ocean Grove Unit 1 plat, this triangular parcel was bounded by public right on all three sides. Soon after platting, the area around the park began to develop with homes and was then annexed by the City of Atlantic Beach in 1987. Two years later, the City of Atlantic Beach first proposed to pave Dewees Avenue, Coquina Place, and Shell Street as well as locate a lift station in this area. After opposition from neighborhood residents, these plans were shut down. The City then decided to purchase this land for use as a public park that would later receive the name “Marvin’s Gardens.”

Years later, in 2002, several petitions from neighborhood residents were submitted to the City Commission for several requests including that the streets be paved and that Marvin’s Gardens be improved. This led to two neighborhood meetings led by former City Manager Jim Hanson and former City Commissioner Desmond Waters and attended by neighborhood residents and city staff. The opinions of residents were divided regarding their desire to have the streets paved and drainage improvements made. A survey was then distributed to residents for their input regarding the multiple paving and drainage options presented by city staff. Of the 30 homeowners that were sent surveys, 21 responded with the majority in favor of paving and drainage improvements. In August 2002, it was decided to proceed with paving and drainage improvements to Dewees Avenue, Coquina Place, and Shell Street and to leave Marvin’s Garden as a green space.





## Existing Conditions/Inventory:

### GENERAL

Address: 1609 Coquina Place  
Park Type: Passive  
Size: 0.12 acres  
Parking: 6 parking spaces

### AMENITIES

3 Benches  
1 Climbing tree with wooden steps  
1 Tire Swing

## Recommendations:

- I. Make the area feel like it is a city park (park sign, split rail fencing to match other parks, etc.)
- II. Upgrade play equipment to standard city type equipment
- III. Enhance landscaping

## Community Input:

### 2018 Public Workshop comments

- “Signs or rename after a person”
- “German Shepherd named “Marvin””
- “Leave as is”

## Staff Input:

⇒ The surrounding residents maintain the park

### 3.13 Riverbranch Preserve

**Historical Background:** River Branch Preserve was acquired in 2009 for preservation purposes. It is approximately 350 acres of marshes and shallow waterways, with several islands. This preserve is located between Dutton Island Preserve and Tide Views Preserve, and it is bordered on the west by the Intracoastal waterway. There are currently no manmade structures in this park with the exception of some canoe/kayak trail signs marking the waterways.

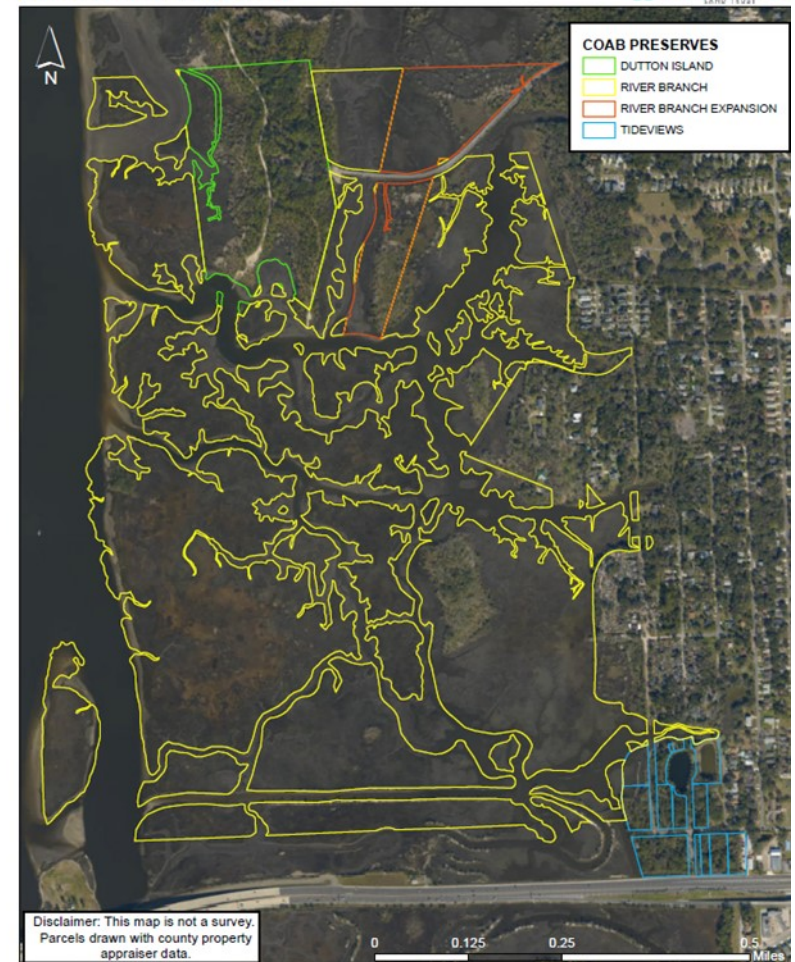
The channels are tidal in nature, and most of the waterways cannot be navigated at low tide. At high tide, the waterways provide excellent venues for kayaks, canoes, and ecotourism excursions. The lands have been maintained primarily in their natural state, and the flora and fauna are outstanding.

The River Branch Preserve connects two other City parks; Tide Views and Dutton Island Preserves. Except for the public access points at the Dutton and Tide Views Preserves, access to the marsh is very limited due to tidal conditions.

#### Recommendations:

- Preserve and enhance environmental resources and scenic value
- Restore and enhance water quality and marine habitat
- Protect native vegetation and wildlife habitat
- Promote passive recreation, and
- Further environmental education.

#### CITY OF ATLANTIC BEACH MARSH PRESERVES



### 3.14 Rose Park & Rose Dog Park

**Historical Background:** Located at the intersection of Rose Street and Orchid Street, Rose Park was designated as park land when platted in the 1930's. While residential development began to occur around the park in the mid-1980's, it remained a vacant, passive park with no recreational facilities. In 1987, the City Commission named the small triangular park "The Adele Grage Park" after long time city clerk, Adele Grage. However, this name did not stick and the park became known as Rose Park shortly after.

In 2001, with funding from the Florida Recreation Development Assistance Program, the city expanded the park with the purchase of six lots to be used as a recreational field. The city also installed the first playground equipment at the park in the area currently used as a dog park. In 2010, led by former Commissioner Daugherty, major renovations to Rose Park were included in the 2010 Strategic Plan. In 2013, a portion of Orchid Street was closed off and incorporated into the park which facilitated the construction of new playground equipment, a multi-use field, a pavilion and the new dog park. A ribbon cutting ceremony was held on December 14, 2013 to celebrate the expanded and renovated Rose Park.





## Existing Conditions/Inventory:

### GENERAL

Address: 1 Orchid Street  
Park Type: Active  
Size: 0.98 acres  
Parking: 10 parking spaces

### AMENITIES

- 1 Playground (with slides, monkey bars, etc)(has mulch floor)
  - 1 Warning sign
  - 2 benches (tall benches about 3+' off ground)
  - 1 Trash can
- 1 Roughly 12'X15' covered area with one picnic table
  - 1 Trash Can
  - 1 Grill
- 1 Swingset (located near covered area)
  - 4 swings (no ADA swings)(mulch floor)
- 1 Large open grass field
  - 2 Soccer Goals
  - 1 Bench
  - 1 Small storage area with lock
- 1 Bike rack for 3 bikes near entrance
- 1 Trash can near entrance
- 1 Dog Park
  - 1 Water fountain (contains fountain for people and lower one for dogs)
  - 1 roughly 8'X10' covered area with picnic table
  - 1 entrance point
  - 3 benches
  - 1 sign with rules
  - 2 dog bag dispensers
  - 1 mobile trash can

## Community Input:

### 2018 Public Workshop comments

- "Bat boxes"
- "Good fencing-use elsewhere in active parks"
- "More landscaping"
- "Shade for playground area"
- "Wash up station for dog park"
- "Public art, community mural"
- "Water fountain"
- "Bathrooms"
- "Working gate"
- "Dog park membership"
- "Dead pines"

### **Staff Input:**

- ⇒ Newer soccer nets
- ⇒ New fence along the north side of the park
- ⇒ Newer playground equipment
- ⇒ Rebuilt cabana
- ⇒ Key card lock keeps getting vandalized and currently does not work

## **Recommendations:**

- I. Add bat boxes
- II. Provide general maintenance for dog park
- III. Provide landscaping for shade area for playground

## 3.15 Selva Preserve

**Historical Background:** In 2017 the City began the process of purchasing part of an undeveloped plat of land in Selva Preserve. The land is part of a 7.2 acre Selva Preserve that was originally proposed to be part of the Atlantic Beach Country Club, re-developed in 2013. Most of the property is wetlands along Sherman Creek. In partnership with the Public Trust with City purchased in the property in 2018. A private donation is to be used for the creation of a greenway through the preserve for the public to enjoy.





### 3.16 Tide Views Preserve

**Historical Background:** Efforts by the City of Atlantic Beach to acquire the Tide Views Preserve property began in the 1980's with hopes to develop the land into a regional park. However, initial efforts were unsuccessful as agreements could not be reached to purchase the property. Several years later, James Tresca agreed to sell roughly 7 acres of marsh front property to the City in 1994. The city was later reimbursed for the purchase through grants from the Florida Communities Trust (FCL) and the Florida Inland Navigation District (FIND). Shortly after the purchase, the city hired Dames and Moore, Inc. to plan and design the future park. The final plan for the park which included a canoe launch, a large picnic area, signage, nature trails, a boardwalk, and restrooms was approved by the City Commission in December 1996.

The park remained unnamed until October 11, 1999, when the City Commission agreed to name it “Tide Views Nature Preserve” and to name the park in honor of Carl Walker, the longtime Beautification Coordinator for the city who passed away earlier that year. The park was then opened to the public with a ribbon cutting ceremony held on October 30, 1999. Around the same time, the park was expanded by roughly one acre with the purchase of additional land on the corner of West First Street and Begonia Street. Within the next few years, the city closed off a portion of Begonia Street which was then sold to the Jacksonville Transportation Authority to allow them to construct a retention pond in connection with the Mayport Flyover construction.

In 2009, the city received a grant from the Florida Inland Navigation District for the construction of a pier and a kayak/canoe launch. Two years later, the pier was completed and officially named “Sunset Pier.” In 2015, the park was again expanded with the purchase of 280 Camelia Street, which created a new access point to the park for neighborhood residents.

## Existing Conditions/Inventory:

### GENERAL

Address: 1 Begonia Street  
Park Type: Passive  
Size: 10.5 acres  
Parking: 16 parking spaces

### AMENITIES

6 Dedication chairs/benches  
9 Trash Cans  
7 Benches  
2 Kayak/Canoe launches  
1 Bathroom  
1 Water fountain  
8 Educational signs  
3 Picnic tables  
1 Covered Gazebo

## Community Input:

### 2018 Public Workshop comments

- “Bat boxes” (twice)
- “Shade?”
- “Purchase the junkyard that is adjacent to the park” (twice)
- “Bike pump track on adjacent city owned land”
- “Public art”
- “Junkyard, check on violations and pollution into Marsh Preserve”
- “Enhance/maintain trails”
- “Clear out homeless campers”

## Staff Input:

- ⇒ North FL Land Trust won't allow any more board-walks or piers
- ⇒ Hammock village added to Benet area
- ⇒ Would like to add walking trail around pond and connect to rest of trails
- ⇒ Problems with homeless hanging out

## Community Input:

### 2018 Public Workshop comments

- “Bat boxes” (twice)
- “Shade?”
- “Purchase the junkyard that is adjacent to the park” (twice)
- “Bike pump track on adjacent city owned land”
- “Public art”
- “Junkyard, check on violations and pollution into Marsh Preserve”
- “Enhance/maintain trails”
- “Clear out homeless campers”

### 2019 Public Workshop comments:

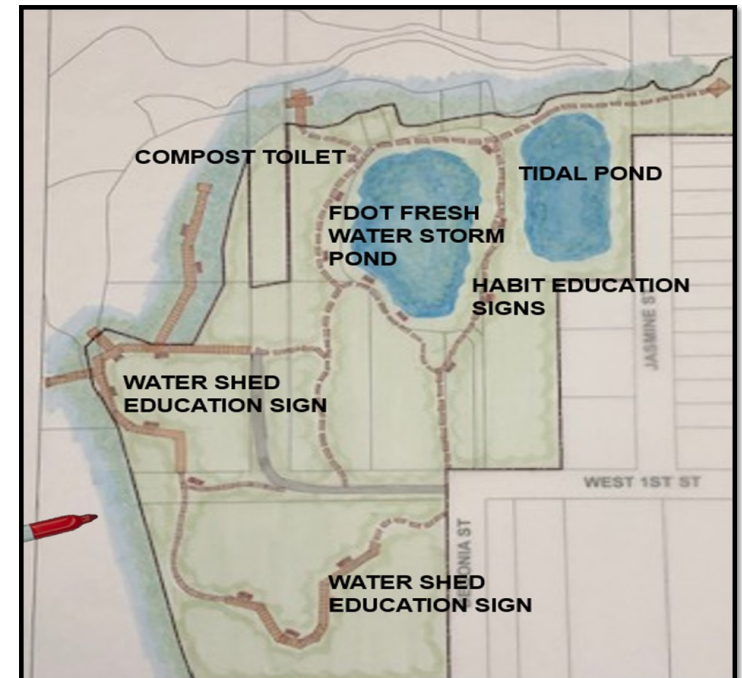
## TIDEVIEWS PRESERVE

- IMPROVE CONNECTIVITY
  - SIDEWALKS (NOT REALLY SPACE)
  - \* - SIGNAGE / WAYFINDING
  - BETTER DEFINITION
- STREET TREE PLANTINGS - ALONG CAMELIA ST.
- REDO BATHROOM
- BUTTERFLY PLANTING (MILKWEED)
- PRESERVATION AREA - (LESS STRUCTURED PLANTINGS)
- CONNECT TO BEACH BIKEWAY
- LINK TO TIDE VIEW
- LOCAL ART murals, sculptures - BENNET'S LANDING + NEIGHBORHOOD PLAYGROUND / SEATING - PAVILION
- 2nd BATHROOM @ NORTH DOCK
  - ↳ KAYAK RENTAL?
- MITIGATE POLLUTION FROM JUNKYARD - MAKE IT A PARK
- PLANTS - GREEN EDUCATION
- TIDAL EDUCATION
- PICNIC
- BIKE CONNECTION TO ATLANTIC
- IMPROVE SENSE OF SAFETY @ PARKING
- ADA ACCESS TO PIERS (?)
- LINK TO KAYAK TRAIL?
- BIKE REPAIR STATION (maybe @ another park?)



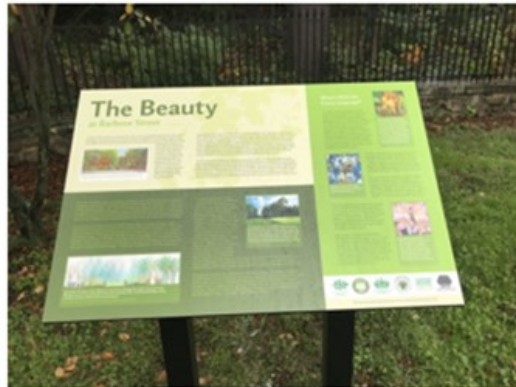
## Recommendations:

- Planting opportunities near ponds and along Jasmine Street right of way. May consider planting along marsh edge to prevent unnecessary mowing and maintenance.
- Install seating around the city drainage pond. Consider adding a shade structure if no shade trees near by.
- Add bicycle parking at all entrances.
- Designate or restrict areas where dogs are allowed.
- Make some of the trails bicycle friendly
- Add wayfinding signage for existing trails and piers/boardwalks.
- Fishing line recycling on piers.
- Consider an arboretum type display at the Bennet property showcasing different natural plants and trees.
- Consider adding a butterfly garden.
- Consider adding a rain garden in the Camelia St right of way near the pump station for enhanced water quality.
- Add a pervious and ADA accessible walking trail around the pond that connects to the existing trails.
- Add sign at Camelia Street entrance so people know that they are entering Tide Views Preserve.
- Maintain and add interpretive/educational signage.



# Tide Views Preserve:

- Interpretive Signage



**NPS RTCA**  
RIVERS, TRAILS & CONSERVATION  
ASSISTANCE PROGRAM  
[www.nps.gov/rtca](http://www.nps.gov/rtca)



**ASLA**  
FLORIDA



# *Tide Views Preserve:*

- Compost toilet near kayak launch



**NPS RTCA**  
RIVERS, TRAILS & CONSERVATION  
ASSISTANCE PROGRAM  
[www.nps.gov/rtca](http://www.nps.gov/rtca)



**ASLA**  
FLORIDA



## 3.17 Veterans Park

**Historical Background:** In January 2003, the City purchased land on the northwest corner of Atlantic Boulevard and Mayport Road from the Jacksonville Transportation Authority in connection with construction of the Mayport Flyover. Later that year, the City Commission agreed to name the property “Atlantic Beach Veterans Memorial Park” to recognize the City’s close connection to the Mayport Naval Base and the several retired military organizations in the area. Initial improvements to the park included a playground, grass and irrigation.

After receiving interest for providing funding from the City of Jacksonville, the Oceanside Rotary Club, and several veterans group, the Atlantic Beach City Commission approved a contract for Tat Chan to prepare a master plan for the park in December of 2009. The master plan consisted of two phases with phase one including a stage, a lawn area, a playground, and landscaping, while phase two included a memorial garden to the west of the stage bordering the American Legion property. On April 12, 2010, the City Commission unanimously approved the designs for both phases of the plan while also approving to rename the park “Beaches Veterans Memorial Park” and to name the future garden “Chaplains Memorial Garden” in honor of the 103 chaplains who lost their lives in combat. At this Commission meeting, representatives from several veterans groups gave their pledge to the City Commission to support the park both financially and with “sweat” equity.

In October of 2010, the City of Jacksonville provided \$50,000 in grant funds for the construction of phase one. Further, the Veterans of Foreign War Post #3270 and the Oceanside Rotary Club both committed \$12,500 each for the installation of the 80 foot flag pole. With a total of \$75,000 provided in funding, construction of phase one began. On Veterans Day in 2010, a dedication and flag raising ceremony was held to unveil the new flag pole and plaza area of the park. Construction of the stage area was later completed in time for a second ceremony on Memorial Day of 2011.

On June 13, 2011 the City Commission approved the plans for the Chaplains Memorial Garden, which included a chaplain’s monument, engraved brick pavers, and six monuments dedicated to the various branches of the Armed Services. Construction for the memorial garden was completed in 2015, completing both phases of the park’s master plan.

## Existing Conditions/Inventory:

### GENERAL

Address: 1 West 1st Street  
Park Type: Active  
Size: 1.5 acres  
Parking: 6 parking spaces

### AMENITIES

- 1 Basketball Court (painted, full court)
    - 2 light posts (only light posts in park)
    - 2 benches (one on each side)
  - 2 Dog bag dispensers
  - 1 Playground (sand bottom)
    - 1 warning sign
  - 1 Swing set (sand bottom)
    - 2 swings (no ADA swings)
  - 1 Roughly 10'X8' covered seating area with one picnic table
  - 1 Stage/Amphitheater (covered)
    - Wheel chair ramp
  - 1 Large flag pole (located behind stage)
  - 1 Large open grass field in front of stage
  - 1 Memorial "Walk"
    - 6 memorial benches dedicated to branches of military
    - Brick path with memorial bricks with veteran's names on them
  - 1 Entrance from Legion parking lot
  - 5 Trash cans
- Park is available to rent for event (reunions, funerals, weddings, etc.)

## Community Input:

### 2018 Public Workshop comments

- "Water fountain"
- "Model gardens-vegetable, xeriscape, rain garden, community garden"
- "Bat boxes"
- "Pavilion with bathrooms and kitchen"
- "Buy adjacent property for senior center"
- "Military flag project (Eagle Scout?), stadium seating, portable grills"
- "More shade!"
- "Shade sail, block sun to pavilion"
- "Bathroom-can't always count on Legion"
- "Add trees along trailer park"
- "Review City Commission approved master plan"

### **Staff Input:**

- ⇒ Updated sidewalk to playground area
- ⇒ Would like to re-surface basketball courts
- ⇒ Difficult to get to park
- ⇒ Playground in great shape
- ⇒ Request to add a side to the sun shade
- ⇒ Added new windscreen adjacent to Mayport Road

**Recommendations:**



## **Recommendations:**

Plant trees to provide shade for attendees of the Memorial and Veterans Day events

Identify parking areas with signage or surface materials

Add pavilion(s) and grill(s) to increase usage and activity of the park

Add a water fountain

Add ADA accessible sitting area for events (shaded)

Consider adding restroom facilities

Add bicycle parking at entrance

Add recycling bins

Consider adding sign at W 1<sup>st</sup> Street entrance

Consider adding bocce and/or shuffleboard to further activate park

History of park signage

## 3.18 Waters Park

**Historical Background:** Purchased in 1989 by the City of Atlantic Beach for use as a public park, the wooded area between 16<sup>th</sup> Street, Ocean Boulevard, and Seminole Road remained unnamed until 1997 when the City Commission designated it as “Mandalay Park.” This name was recommended by the Parks and Recreation Board, which was chaired by J. Dezmond Waters III at the time, and came from Mandalay Avenue which was a part of what is now Ocean Boulevard. The street was originally named after the Mandalay Company, which in 1938, deeded various streets to the Town of Atlantic Beach. Soon after this designation, trails, benches, and a water fountain were added to the park.

Years later in 2011, the park was renamed “Waters Park” in memory of J. Dezmond Waters III for his many years of devotion and service to the City of Atlantic Beach and its citizens. Mr. Waters served as an Atlantic Beach City Commissioner from 1991 to 1995 and again from 1999 to 2007. Additionally, he served on numerous boards and committees including as Chairman of the Atlantic Beach Parks and Recreation Board, Community Development Board, Chairman of the Atlantic Beach Zoning Committee, First Night Committee, President of the Town Center Agency, founding member and Chairman of the Atlantic Beach Beautification Committee, President of the North Duval Beaches Association, Chairman of the Atlantic Beach Tree Conservation Board, and member of the Beaches Center Oversight Committee.

## Existing Conditions/Inventory:

### GENERAL

Address: 1601 Seminole Road  
Park Type: Passive  
Size: 0.25 acres  
Parking: 24 parking spaces

### AMENITIES

1 Swinging bench  
1 Water fountain  
2 Trash Cans  
2 Picnic tables  
1 Pet waste bag dispenser  
1 Drive-up area for Mail drop box and Newspaper Boxes  
1 Memorial plaque to former Commissioner Dezmond Waters

## Community Input:

### 2018 Public Workshop comments

- “Clear underbrush for visibility”
- “Crime?”
- “General for city medians (e.g. Selva Marina, Saturiba, 19th, etc.) have tree service clean up dead branches on Live Oaks and plant more trees”

## Staff Input:

- ⇒ Would like to add turf block parking
- ⇒ Would like to add a playground



**Recommendations:**